



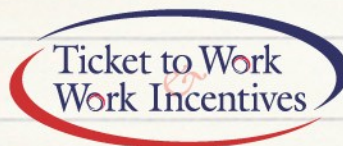
Helping You Today *So You Succeed Tomorrow*

TICKET TO WORK

Ticket to Work: Free Support Services For Young Adults in Transition

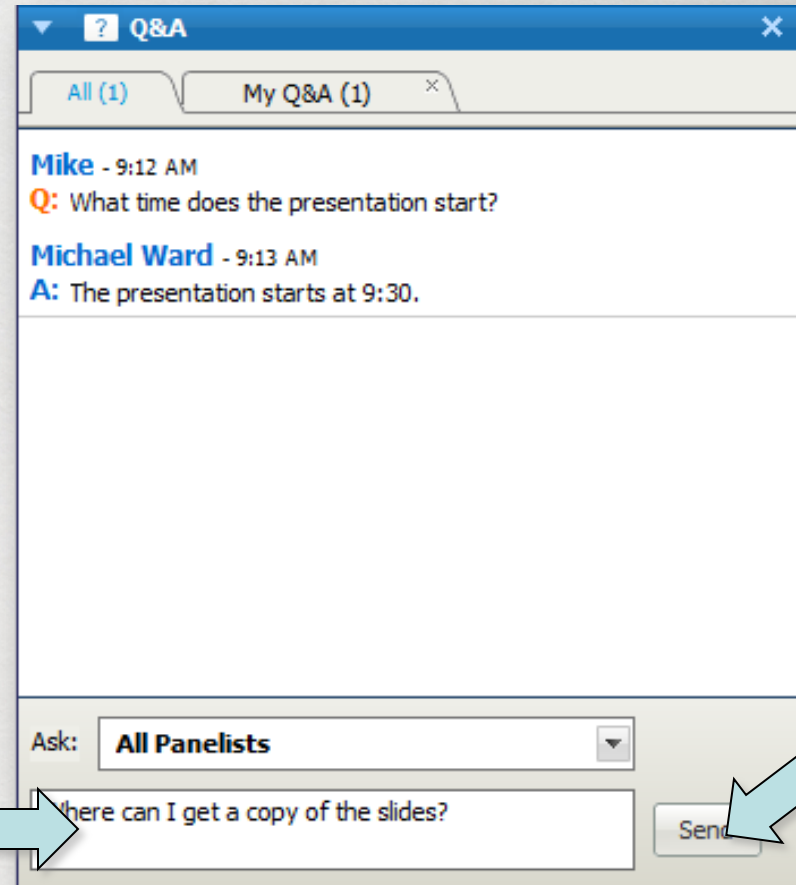
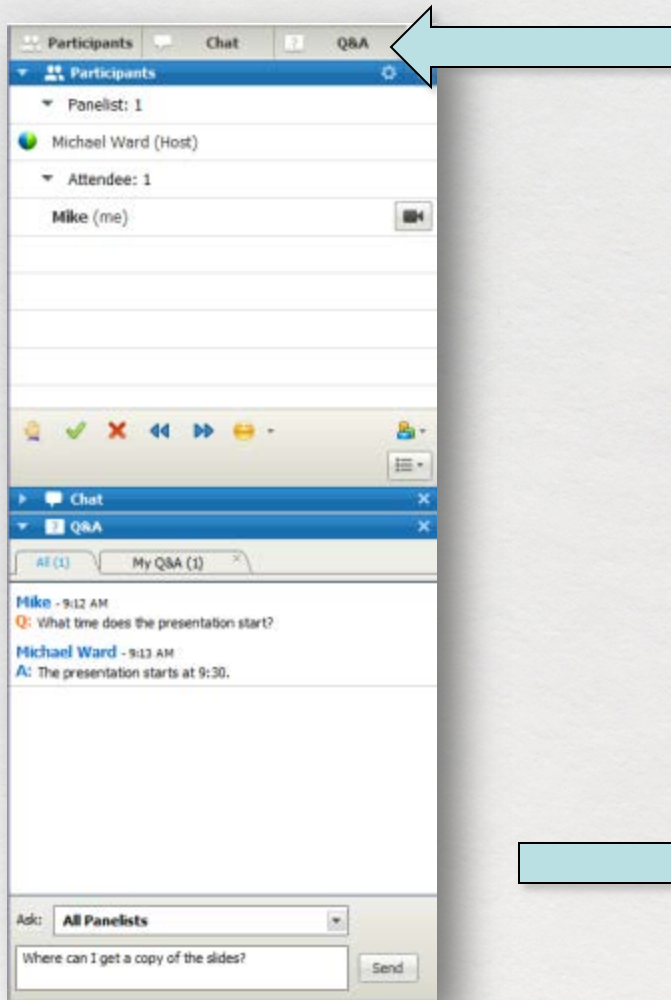


Work Incentives Seminar Event

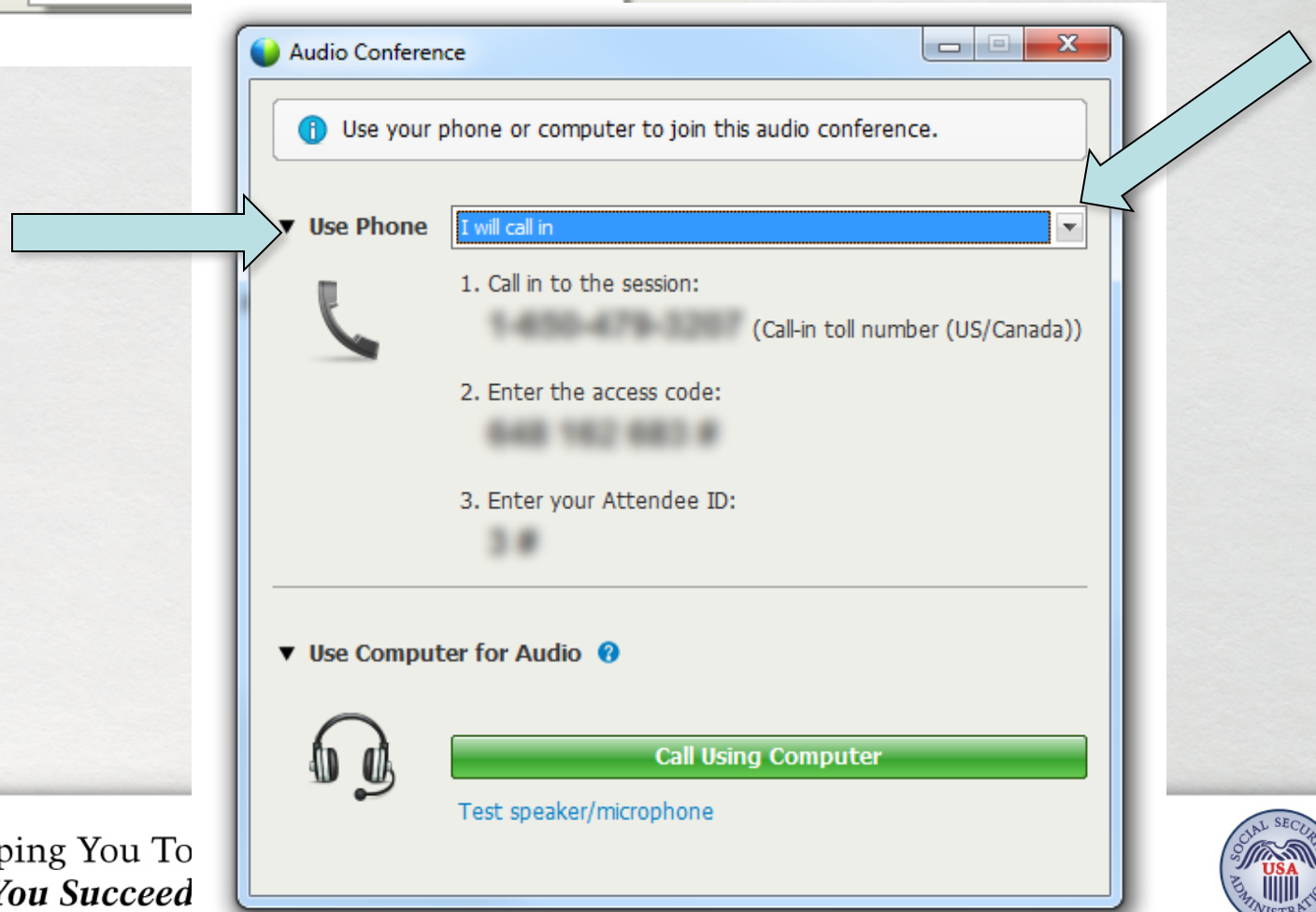
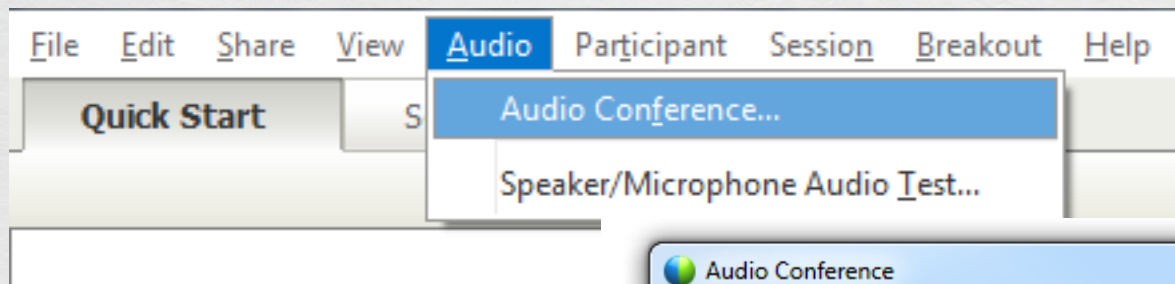


September 12, 2013
3:00-4:30 p.m.

Adjusting Audio Mode



Audio and Questions Panels



Webinar Accessibility



Helping You Today
So You Succeed Tomorrow



Webinar Accessibility

- Toll-Free number: 855-749-4750
 - Access code: 642-720-355
 - Closed captioning:

http://www.edi.cornell.edu/captions.cfm?activity_id=4893

- Webinar PowerPoint, accessible PDF, and text are located at the URL link you received in your WISE confirmation and access letter.



Helping You Today
So You Succeed Tomorrow



Webinar Accessibility

- Webinar presentation, transcript, and audio recording will be available in approximately two weeks at:

www.ilr.cornell.edu/edi/m-wise-webinars.cfm

- Webinar question & answer period

During the webinar, submit your questions on the webinar “[question and answer box](#)” or to webinars@choosework.net

Anytime after the webinar day, email your questions to support@chooseworkttw.net



Helping You Today
So You Succeed Tomorrow



Agenda

- **Welcome and Introduction**
Ray Cebula, Employment & Disability Institute, Cornell University
- **The Ticket to Work Program**
Kendra Berry, Aspire Indiana Works
- **Work Incentives and Youth in Transition**
Kendra Berry, Aspire Indiana Works
- **Employment Networks**
Briggs & Associates
- **Additional Tips and Resources for Youth in Transition**
Presentation Team
- **Questions and Answers**
Presentation Team



Helping You Today
So You Succeed Tomorrow



Meet Ben!

An Introduction to Ticket to Work



Helping You Today
So You Succeed Tomorrow



Why Choose Work?

- Earn more income



Why Choose Work?

- Earn more income
- Gain independence



Why Choose Work?

- Earn more income
- Gain independence
- **Meet new people**



Why Choose Work?

- Earn more income
- Gain independence
- Meet new people
- **Learn new skills**



Social Security Disability Benefit Programs



Social Security
Disability Insurance
(SSDI)



Helping You Today
So You Succeed Tomorrow



Social Security Disability Benefit Programs



Social Security
Disability Insurance
(SSDI)

Supplemental
Security Income
(SSI)



Helping You Today
So You Succeed Tomorrow



Social Security Disability Benefit Programs



Social Security
Disability Insurance
(SSDI)

Supplemental
Security Income
(SSI)

Both SSDI and SSI =
Concurrent Benefits

The Ticket to Work Program



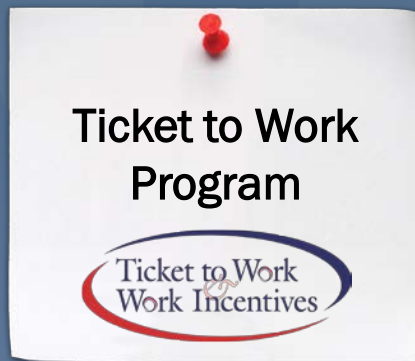
Kendra Berry, Aspire Indiana Work



Helping You Today
So You Succeed Tomorrow



What Is Ticket to Work?



Ticket to Work is a **free** and **voluntary** program to assist SSDI and SSI beneficiaries age 18 through 64 who have a disability go to work, enter the workforce for the first time, or increase their current work hours.

Our representatives at the **Ticket to Work Help Line** can help you understand how the program can work for you. For more information, call **1-866-968-7842** (V), 1-866-833-2967 (TTY), or visit www.socialsecurity.gov/work.



Helping You Today
So You Succeed Tomorrow



When You're Ready To Work



The Ticket to Work Program



If You:	Ticket to Work & Work Incentives Can:
Are ready to earn more money!	Help you improve your earning potential
Need the personal fulfillment that comes from working...	Provide the assurance and stability you need to feel confident while you pursue employment
Want to be able to get benefits back if your job does not work out because of your disability...	Put you on the fast track back to receiving benefits
Are overwhelmed and do not know where to turn...	Connect you with the people, resources and services you need to develop a work plan



Helping You Today
So You Succeed Tomorrow



When You're Ready To Work



Building your Employment Team is the best way to begin. You have options to help you get started:

- [Speak with an expert](#) at our Ticket to Work Help Line at 1-866-968-7842 (V) or 1-866-833-2967 (TTY).
- [Learn more about Ticket to Work](#), read our blog, and view, listen, or read real success stories at www.socialsecurity.gov/work.
- [Find an Employment Network](#) (EN) that meets your needs or work with your state VR agency.
- [Stay connected to your Employment Team](#) (EN or VR) as you explore your work options.

Meet Megan: A Ticket to Work Success Story!



Helping You Today
So You Succeed Tomorrow



Work Incentives for Young Adults in Transition



Kendra Berry, Aspire Indiana Works

Young Adults in Transition

Three incentives designed just for you!

Student Earned
Income Exclusion
(SEIE)



Plan to Achieve Self
Support
(PASS)



Section 301
Continuing Benefits



Medicaid
1619(b)



Young Adults in Transition

Student Earned
Income Exclusion
(SEIE)



SSI

- If you are **under age 22** and **regularly attending school**, you qualify for SEIE.
- Social Security does not count up to **\$1,750** of earned income per month when figuring your SSI payment (maximum yearly exclusion = **\$7,060**).
- SEIE is applied **before** your general income exclusion or your earned income exclusion.

Young Adults in Transition

Student Earned
Income Exclusion
(SEIE)



SSI

You are **regularly attending school** if you take one or more courses and attend classes:

- In a college or university for at least **8 hours a week** OR
- In **grades 7-12** for at least **12 hours a week** OR
- In a **training course** to prepare for employment for at least **12 hours a week** (15 hours a week if the course involves shop practice).

Young Adults in Transition

Student Earned
Income Exclusion
(SEIE)



SSI


You are **regularly attending school** if you are home taught and:

- You are instructed in **grades 7-12** for at least **12 hours a week AND**
- The instruction is in accordance with a **home school law** of your state or jurisdiction.

If you are home taught **because of your disability**:

- Your courses of study must be **provided by a school** (grades 7-12), college, university or government agency **AND**
- A **home visitor or tutor** must direct the study.

Young Adults in Transition



Plan to Achieve
Self Support
(PASS)


PASS



SSI

- If you receive SSI or can become eligible to receive it, you could benefit from a **PASS plan**.
- A PASS allows you to **set aside other income** besides your SSI for a specified period of time so that you may pursue a **work goal**.
- When Social Security figures your SSI payment amount, they **do not count** the income that you set aside under your PASS plan.

Young Adults in Transition



Plan to Achieve
Self Support
(PASS)

PASS




SSI

An EN, VR agency, social worker, or benefits specialist can help you set up a PASS that must:

- Be **in writing** and **designed especially for you**
- Identify a **specific work goal** that you are capable of performing
- Include a **specific timeframe** for reaching your work goal
- Show what **income you receive** (other than SSI) and how that income will be **used to reach your work goal**
- Be **approved** and **reviewed** periodically to measure progress toward your work goal

Young Adults in Transition



Section 301 Continuing Benefits

Section
301


SSDI

SSI

If Social Security determines that you no longer have a disabling condition, your benefits usually stop

- But, if you have assigned your Ticket to an EN or your Ticket is “in use” with a VR agency, your **benefits may continue.**
- Your participation **must be Social Security approved** AND
- Your participation must **show progress** toward your work goal.

Young Adults in Transition



Section 301
Continuing
Benefits

Section
301



Section 301 may apply even if you are not in the Ticket Program

- Visit the **Red Book** online to learn more:
<http://www.ssa.gov/redbook/eng/ssdi-and-ssi-employments-supports.htm>
- **Speak with an expert** at our Ticket to Work Help Line at 1-866-968-7842 (V) or 1-866-833-2967 (TTY).

Medicaid While Working: Section 1619(b)



After you return to work, your **Medicaid** Medicaid coverage can **continue**, even if your earnings (alone or in combination with your other income) become too high for a Supplemental Security Income (SSI) cash payment.

Medicaid While Working: Section 1619(b)



To qualify, you must meet all of the following qualifications:

- Were eligible for an SSI cash payment for at least **1 month**;
- **Would be eligible** for cash payment except for earnings;
- Still have a **disability**;
- Still meet all **other** eligibility rules, including the resources test;
- Need Medicaid **in order to work**; and
- Have gross earned income that is insufficient to replace SSI, Medicaid, and any publicly funded attendant care.

Do all states use the same Medicaid eligibility rules?



The following states use **their own** their own eligibility rules for Medicaid that are different from Social Security's SSI eligibility rules:

Connecticut	Minnesota
Ohio	Hawaii
Missouri	Oklahoma
Illinois	New Hampshire
Virginia	Indiana
North Dakota	

If you live in one of these states, you will continue to be eligible for Medicaid under section 1619(a) or 1619(b) if you were eligible for Medicaid in the month before you became eligible for section 1619.

Medicaid Buy-In: How Does it Help You?



Your state may allow you to **buy Medicaid** buy Medicaid if you are disabled and no longer entitled to free Medicaid because you returned to work.

Medicaid Buy-In: How Does it Help You?



You may qualify if you:

- Meet the definition of **disabled** under the Social Security Act; and
- Would be eligible for **SSI** payments if it were not for your earnings.
- If you are **not** an SSI recipient, your state decides if you are disabled. Your state will not consider whether you are working when it makes that decision.

How can
you get more
information?



Every state has its own Medicaid Office. For help, please call **1-800-MEDICARE (1-800-633-4227) (V) or 1-877-486-2048 (TTY).**

You will be asked for your Medicare number and transferred to the main menu. Choose **other choices** and then **another question.**

You will be transferred to a representative. Be prepared to tell them **your state** and to **write down** a toll free number for additional information.

Employment Network (EN)



**BRIGGS
& ASSOC**

What is an Employment Network (EN)?



ENs are organizations and agencies, including your **state Vocational Rehabilitation (VR) agency**, that entered into an agreement with Social Security to provide

- **Employment services**
- **Vocational rehabilitation services**
- and **other types of support services** to people receiving Social Security disability benefits with disabilities under the Ticket to Work program.

Select an Employment Network That's Right For You



**BRIGGS
& ASSOC**

After you've located a few ENs near you, choose one that can answer your employment questions:

- **How many people have you helped** through the Ticket to Work program?
- **What kinds of companies do you work with** for job placements?
- **What kinds of jobs might be available** to me?
- **How often will we communicate** and meet?



When You Call the EN Office, Remember These Tips



- The EN should explain **how the Ticket to Work program works** and **the services it provides**.
- The EN should ask about your **work goals** and **intentions about work**.
- The EN should talk with you about any **fears you may have**.
- You and the EN will develop an **Individual Work Plan** that includes your employment goals and the services the EN will provide to help you get there.

What is Project SEARCH?



- The **Project SEARCH High School Transition Program** is a unique, business led, one year school-to-work program that takes place entirely at the workplace.
- Total workplace immersion facilitates a seamless combination of **classroom instruction, career exploration, and hands-on training** through worksite rotations.

How does Briggs & Associates Participate?



The **Briggs & Associates Project SEARCH** program was developed as a collaborative effort with:

- State Division of Developmental Disabilities,
- Department of Labor's Vocational Rehabilitation Division,
- Area school systems,
- and several of Georgia's leading hospital and banking systems.

What Types of Jobs are Available?



In **hospitals**, participants provide

- Emergency and operating room supply stocking
- Equipment and materials processing and stocking
- Pharmacy packaging and documentation services
- Business/medical records office support
- Patient/guest escort and information services

What Types of Jobs are Available?



In **banking**, participants provide important support duties in

- Imaging processing
- Records filing
- Check and statement processing
- Shipping and mail services
- General loan department assistance

Where to Get More Information



To learn more about Project SEARCH,
visit www.projectsearch.us



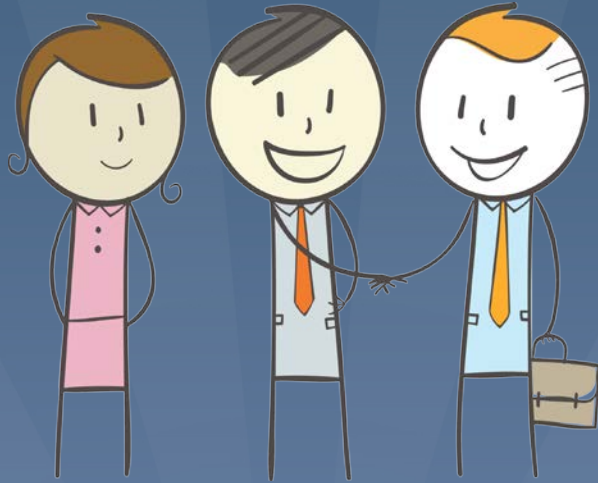
To learn more about Briggs &
Associates, visit
www.briggsassociates.org



Additional Tips and Resources for Youth in Transition

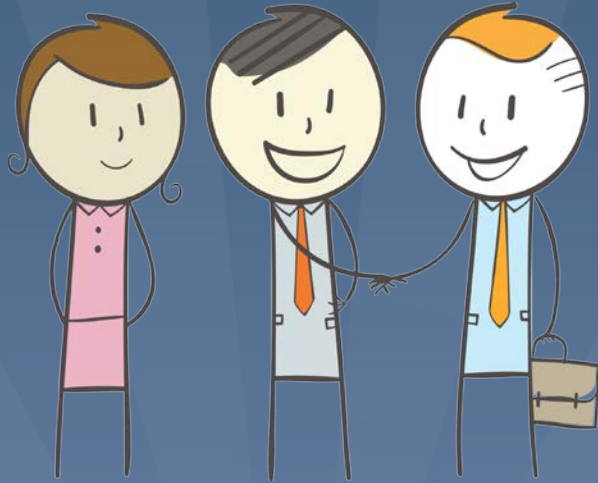


Find a Mentor!



Advice, guidance, support, and connections are just some of the benefits of finding a mentor. Having a mentor gives you the opportunity to learn from someone who knows about your field of interest and your individual experience.

Find a Mentor!



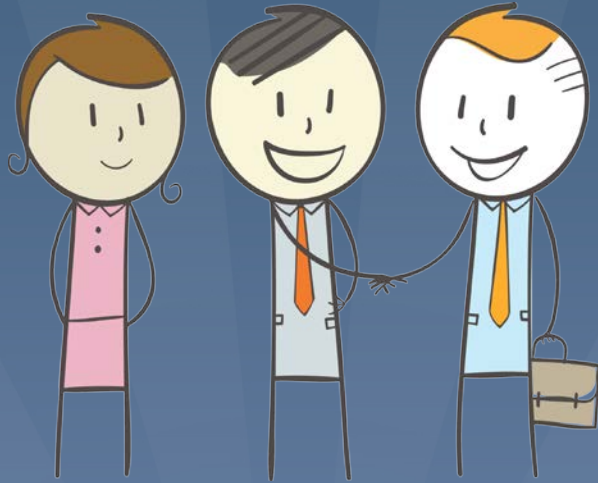
AAPD's **Disability Mentoring Day** (DMD) program connects nearly 16,500 students and job seekers with disabilities to thousands of employers each year.



Helping You Today
So You Succeed Tomorrow



Find a Mentor!



DMD, held the third Wednesday in October, promotes career development through hands-on programs, job shadowing, and ongoing mentoring. This experience has helped thousands of past participants develop lasting relationships and secure internships or jobs.

Find more information on Disability Mentoring Day online at www.aapd.com.



Polishing Your Resumé and Interview Tips



- Most jobs require a **résumé**, and it is often your first chance to **impress** a potential employer.
- Disability.gov has a directory of **résumé** resources online.
- Take a look at <https://www.disability.gov/can-get-help-writing-resume-preparing-interviews/>
- This page also includes tips on doing well in an interview!

Workforce Recruitment Program (WRP)

The WRP is a **recruitment** and **referral** program that connects federal employers nationwide with highly motivated college students and recent graduates with disabilities who are eager to prove their abilities in the workplace through summer or permanent jobs.

49

WORKFORCE RECRUITMENT PROGRAM



the right match

Search the WRP database to find
the perfect fit for your needs



Workforce Recruitment Program (WRP)

- To be eligible for the WRP, candidates must be **current, full-time** undergraduate or graduate students with a disability, or have graduated **within one year** of the release of the WRP database each December.
- For more information, visit www.wrp.gov.

50

WORKFORCE RECRUITMENT PROGRAM

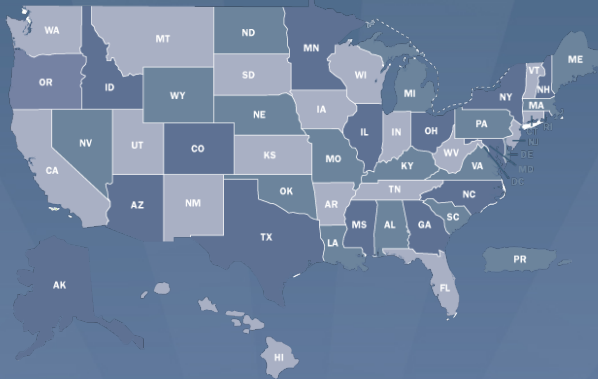


the right match

Search the WRP database to find
the perfect fit for your needs



Where to Get More Information



Visit: www.socialsecurity.gov/work to find your Employment Network and other Ticket to Work and Work Incentives information.

Call:

Ticket to Work Help Line:

- 1-866-968-7842 (V)
- 1-866-833-2967 (TTY)



Helping You Today
So You Succeed Tomorrow



Share a Success Story!



- Social Security's Ticket to Work program may be looking for you.
- Are you **18 through 30**? Do you currently or did you, in the past, participate in Social Security's **Ticket to Work** Ticket to Work program?
- We are looking for young adults who are willing to share their successes of transitioning from school to work and adulthood with the Ticket to Work program.

Share a Success Story!



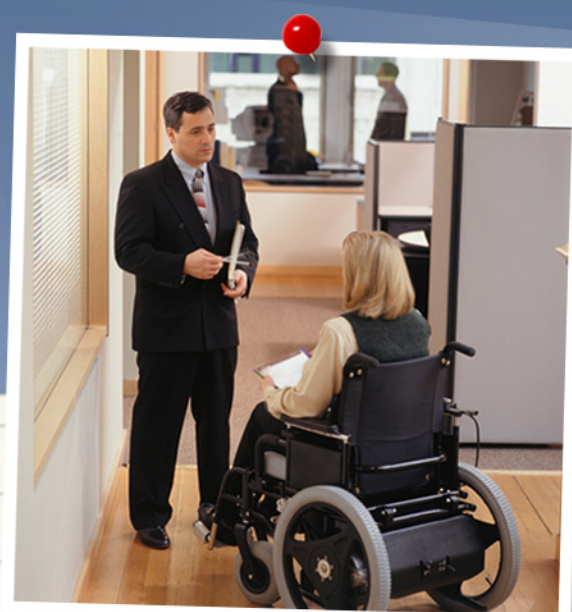
Help make someone else's transition to work easier! Submit your story to stories@choosework.net.



Helping You Today *So You Succeed Tomorrow*

TICKET TO WORK

More Jobs for People with Disabilities: What New Regulations Can Mean for You



Work Incentives Seminar Event



Date: Wednesday, July 30,
Time: 3:00-4:30 pm EDT

Accessing the Facebook Q&A

Facebook
Question &
Answer



- **Attend the Facebook Q&A** after today's webinar, 4:30-5:30 p.m., EDT.
- To **view the Facebook Q&A session**, visit <http://www.facebook.com/choosework>.
- To **participate and ask questions** during the Facebook Q&A, login with a Facebook account:
 - Create a Facebook account:
<http://www.facebook.com/help/createaccount>
 - Facebook accessibility and assistive technology:
www.facebook.com/help/accessibility

Accessing the Facebook Q&A

Facebook
Question &
Answer



- **Participate** via HTML at http://m.facebook.com/choosework#!/choosework?v=feed&__user=0.
- If you cannot access Facebook, **send your questions** to webinars@choosework.net.
- **Visit** the Choose Work blog after the session to access the Facebook Q&A transcript.

Question and Answer Period



- During the webinar, submit your questions on the webinar “[question and answer box](#)” or to webinars@choosework.net
- Anytime after the webinar day, email your questions to support@chooseworkttw.net

Questions?



Like us on Facebook: <http://www.facebook.com/choosework>



Follow us on Twitter: <http://www.twitter.com/chooseworkssa>

Ticket to Work Help Line: 1-866-968-7842 (V) or 1-866-833-2967 (TTY)



Helping You Today
So You Succeed Tomorrow

