



Helping You Today *So You Succeed Tomorrow*

# TICKET TO WORK

**Finding and Keeping the Job  
That's Right for You**

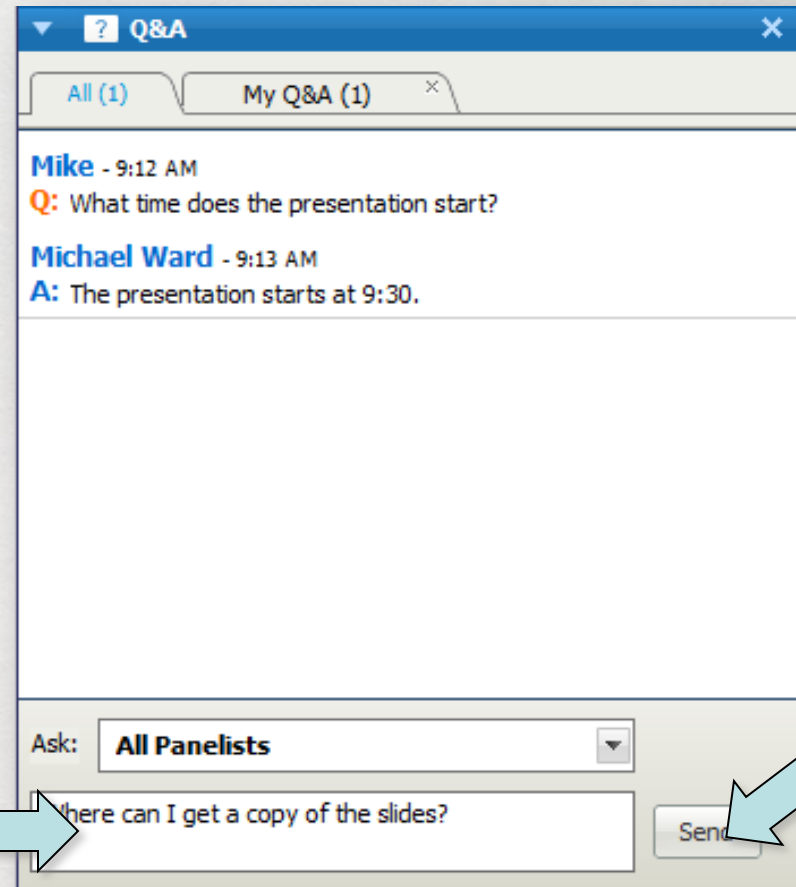
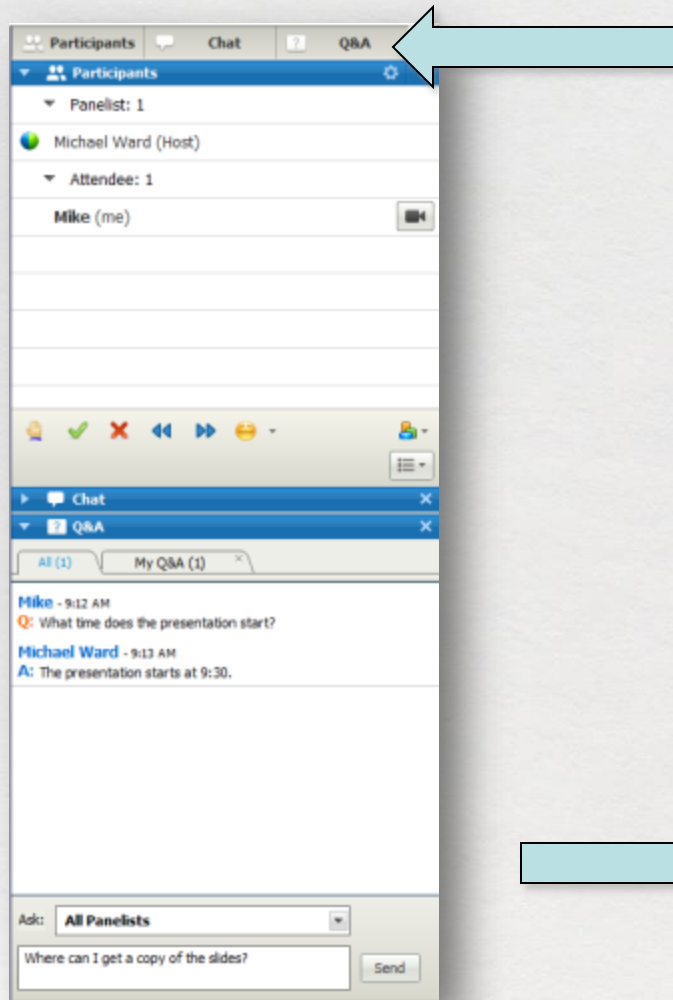


**Work Incentives Seminar Event**

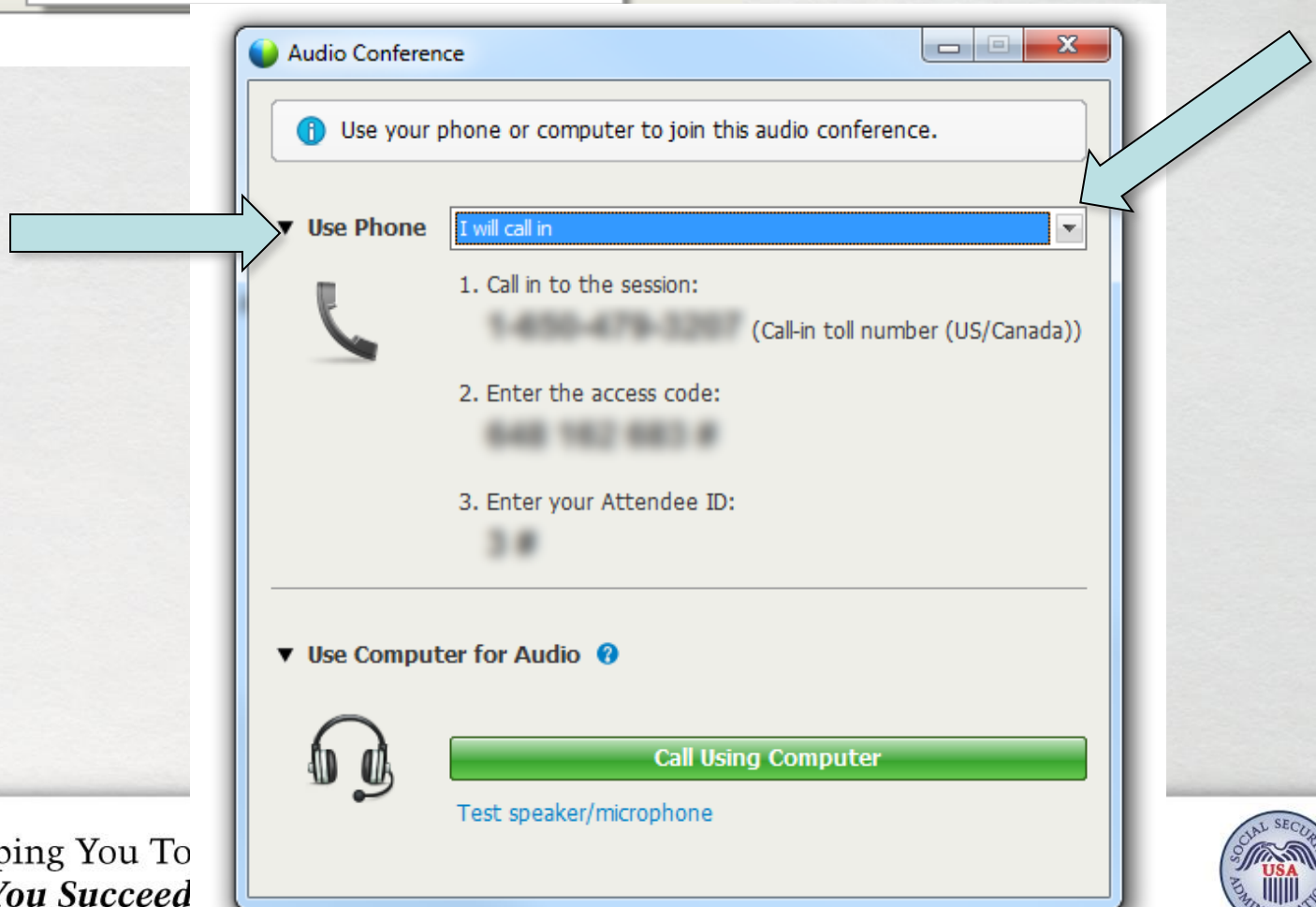
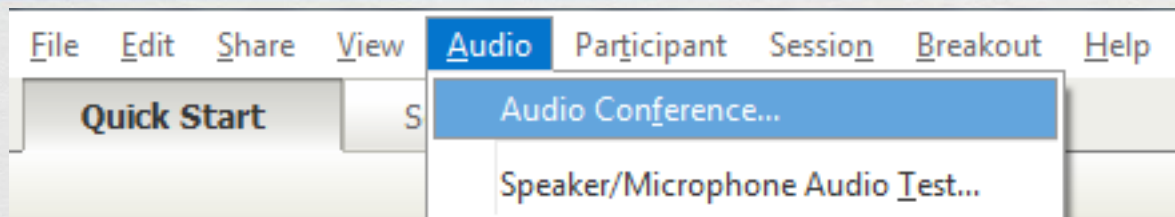


Date: Wednesday, August 27  
Time: 3:00 - 4:30 pm EDT

# Adjusting Audio Mode



# Audio and Questions Panels





# Webinar Accessibility



Helping You Today  
*So You Succeed Tomorrow*



# Webinar Accessibility

- Toll-Free number: 855-749-4750
  - Access code: 640-053-838
- Webinar PowerPoint, accessible PDF, and text are located at the URL link you received in your WISE confirmation and access letter.



Helping You Today  
***So You Succeed Tomorrow***



# Closed Captioning

- Real-time captioning is provided during this webinar.
  - Closed captioning:  
[http://www.edi.cornell.edu/captions.cfm?activity\\_id=4979](http://www.edi.cornell.edu/captions.cfm?activity_id=4979)
- The captions can also be found in the Media Viewer panel, which appears in the lower-right corner of the webinar platform.
- If you want to make the Media Viewer panel larger, you can minimize other panels like Chat, Q&A, and/or Participants.

# Webinar Accessibility

- Webinar presentation, transcript, and audio recording will be available in approximately two weeks at:

[www.ilr.cornell.edu/edi/m-wise-webinars.cfm](http://www.ilr.cornell.edu/edi/m-wise-webinars.cfm)

- Webinar question & answer period

During the webinar, submit your questions on the webinar “chat” or to

[webinars@choosework.net](mailto:webinars@choosework.net)

Anytime after the webinar day, email your questions to [support@chooseworkttw.net](mailto:support@chooseworkttw.net)



Helping You Today  
***So You Succeed Tomorrow***





# Agenda

- **Welcome and Introduction**  
Ray Cebula, Employment & Disability Institute, Cornell University
- **Exploring Your Work Goals**  
Sherman Gifford, The Choice Group
- **The Ticket to Work Program**  
Linda Johnson, Endependence Center and  
David Leon, Virginia Department for Aging and  
Rehabilitative Services
- **Building Your Employment Team**  
David Leon
- **Vocational Rehabilitation & Employment Networks**  
David Leon and Sherman Gifford
- **Work Incentives**  
Linda Johnson
- **Other Resources**  
Ray Cebula
- **Questions and Answers**  
Presentation Team



Helping You Today  
*So You Succeed Tomorrow*





# Meet Ben!

## An Introduction to Ticket to Work



Helping You Today  
*So You Succeed Tomorrow*



# Why Choose Work?

- Earn more income



# Why Choose Work?

- Earn more income
- Gain independence



# Why Choose Work?

- Earn more income
- Gain independence
- Meet new people





# Why Choose Work?

- Earn more income
- Gain independence
- Meet new people
- **Learn new skills**



# Social Security Disability Benefit Programs



Social Security  
Disability Insurance  
(SSDI)



Helping You Today  
*So You Succeed Tomorrow*



# Social Security Disability Benefit Programs



Social Security  
Disability Insurance  
(SSDI)

Supplemental  
Security Income  
(SSI)



Helping You Today  
*So You Succeed Tomorrow*



# Social Security Disability Benefit Programs



Social Security  
Disability Insurance  
(SSDI)

Supplemental  
Security Income  
(SSI)

Both SSDI and SSI =  
Concurrent Benefits





# Finding and Keeping the Job That's Right for You: Exploring Your Work Goals

Sherman Gifford  
The Choice Group

# What are Your Work Goals?



Take some time to think about these questions:

- What **type of work** do I like to do?
- What are my **interests**?
- What **kind of job** do I want now?
- What kind of job do I want **5 years from now**?



# What are Your Work Goals?



Take some time to think about these questions:

- What are my **long-term career goals?**
- **Where do I want to work?** At home? In an office? Outside? Etc.
- Do I want to be **self-employed** or **work for someone else?**





# What are Your Work Goals?



After you get a sense of the kind of job you want, ask yourself these questions:

- Do I have a **particular** job in mind or do I **need help** finding a job?
- Do I need help with my **résumé** or **interview** skills?
- Do I need help to **understand** how working will affect my benefits?





# What are Your Work Goals?



After you get a sense of the kind of job you want, ask yourself these questions:

- What type of **training** or **education** might I need to reach my goal?
- Will I need **assistance at my workplace?** Special equipment? A job coach or special schedule?





# Finding and Keeping the Job That's Right for You: The Ticket to Work Program

Linda Johnson

Independence Center

David Leon

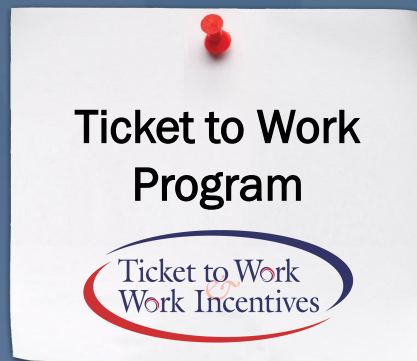
Virginia Department of Aging  
and Rehabilitative Services



Helping You Today  
*So You Succeed Tomorrow*



# What Is Ticket to Work?



Ticket to Work is a **free** and **voluntary** program to assist SSDI and SSI beneficiaries who have a disability go to work, enter the workforce for the first time, or increase their current work hours.

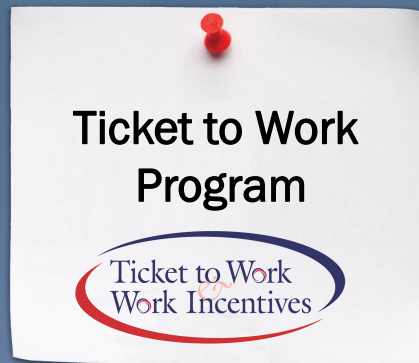
Our representatives at the **Ticket to Work Help Line** can help you understand how the program can work for you. For more information, call **1-866-968-7842** (V), 1-866-833-2967 (TTY), or visit [www.socialsecurity.gov/work](http://www.socialsecurity.gov/work).



Helping You Today  
*So You Succeed Tomorrow*



# When You're Ready To Work



## The Ticket to Work Program



If You:	Ticket to Work & Work Incentives Can:
Are ready to earn more money!	Help you improve your earning potential
Need the personal fulfillment that comes from working...	Provide the assurance and stability you need to feel confident while you pursue employment
Want to be able to get benefits back if your job does not work out because of your disability...	Put you on the fast track back to receiving benefits
Are overwhelmed and do not know where to turn...	Connect you with the people, resources and services you need to develop a work plan



Helping You Today  
*So You Succeed Tomorrow*





# A Real Ticket to Work Success Story!

## Meet Larry



Larry, who has autism, worked with his local VR agency to find full time employment.



Once his case was closed with VR, he assigned his Ticket to Work to an EN for continued services.



# Finding the Job That's Right for You: Building Your Employment Team

David Leon



Helping You Today  
*So You Succeed Tomorrow*



# When You're Ready To Work



Building your Employment Team is the best way to begin. You have options to help you get started:

- **Speak with an expert** at our Ticket to Work Help Line at 1-866-968-7842 (V) or 1-866-833-2967 (TTY).
- **Learn more about Ticket to Work**, read our blog, and view, listen, or read real success stories at [www.socialsecurity.gov/work](http://www.socialsecurity.gov/work).



# When You're Ready To Work



Building your Employment Team is the best way to begin. You have options to help you get started:

- **Find an Employment Network** (EN) that meets your needs or work with your state VR agency.
- **Stay connected to your Employment Team** (Work Incentives Planning and Assistance (WIPA), Protection and Advocacy for Beneficiaries of Social Security (PABSS), EN, or VR) as you explore your work options.





# Finding and Keeping the Job That's Right for You: Vocational Rehabilitation & Employment Networks

David Leon &  
Sherman Gifford

# Who Can Help You?



Now that you have thought more about your work goals and building your employment team, it is time to select a **service provider**.

The Ticket program offers you a choice of service providers:

- **Employment Networks**
- State **Vocational Rehabilitation** (VR) agencies.

## What services do VR Agencies and ENs offer?

Both offer specialized services such as **career counseling and job placement**, and much more!



# What are VR Agencies?



- Usually work with individuals who need more **significant services**; in some states, this includes intensive **training, education** and **rehabilitation**.
- May include more specialized services, such as **funding** for transportation and assistive technology aids.





# What are VR Agencies?



When you use your Ticket for VR services:

- If you receive Social Security benefits because of your disability, you are **categorically eligible for VR services.**
- You and your VR counselor develop an **employment plan.**
- Your **Ticket is assigned to your VR** when you and your counselor sign your employment plan.
- Social Security will **postpone your Continuing Disability Reviews** (CDRs) as long as you are making timely progress towards employment and are working with either an EN or VR agency.

# What is an Employment Network?



- **Private** or **public** organization
- Helps with **career counseling**  
Provides assistance with **job placement**
- Have offices in your **community** or in your **state**
- Some serve people wherever they live by offering **virtual** services.

# Can I Work With an EN and a VR?



You also have the option of receiving services from your **state VR agency** and then, when your VR services have ended, you can work with an **EN** to receive other services that will help you to **find a job**, or to **keep** the one you already have.





# Finding and Keeping the Job That's Right for You: Work Incentives

Linda Johnson



# What are Work Incentives?

Work Incentives make it possible for you to **explore work** while still receiving health care and cash benefits; they are designed to help you **succeed!**

- You may keep your **Medicaid/Medicare** while you work.
- You have access to individualized **support services.**
- You can try work with confidence, knowing your benefits continue during your transition period.



Helping You Today  
*So You Succeed Tomorrow*



# Work Incentives Once You're on the Job



## Trial Work Period

SSDI

Allows you to test your ability to work for at least nine months. During your TWP, you will receive full SSDI benefits no matter how much you earn as long as your work activity is reported and you have a disabling impairment.



## Expedited Reinstatement

SSI

SSDI

If your benefits stopped because of your earnings level, you can request to have your benefits reinstated without having to complete a new application. While Social Security determines your benefits reinstatement, you are eligible to receive temporary benefits for up to six months.

# Work Incentives Once You're on the Job



## Extended Period of Eligibility

SSDI

After the TWP ends, you will move into what is known as the Extended Period of Eligibility (EPE). During this 36-month (three year) period, you receive full cash benefits for months where your gross earnings are below the Substantial Gainful Activity (SGA) level, which in 2014 is \$1,070 (or \$1,800 if your disability is due to blindness).



## Impairment Related Work Expenses

SSI

SSDI

Social Security deducts the cost of certain impairment-related items and services that you need to work from your gross earnings when they decide if your work is SGA. It does not matter if you also use these items and services for non-work activities.



# Where Can You Get More Information on Work Incentives?

View the March, 2014, webinar archive, You Asked, We Answer.

[www.edi.cornell.edu/m-wise-webinars.cfm#2014-03-26](http://www.edi.cornell.edu/m-wise-webinars.cfm#2014-03-26)

To learn more, visit

[www.socialsecurity.gov/work](http://www.socialsecurity.gov/work)



Helping You Today  
*So You Succeed Tomorrow*





# Other Resources

Ray Cebula



Helping You Today  
*So You Succeed Tomorrow*



# When You're Ready To Work



Building your Employment Team is the best way to begin. You have options to help you get started:

- **Speak with an expert** at our Ticket to Work Help Line at 1-866-968-7842 (V) or 1-866-833-2967 (TTY).
- **Learn more about Ticket to Work**, read our blog, and view, listen, or read real success stories at [www.socialsecurity.gov/work](http://www.socialsecurity.gov/work).
- **Find an Employment Network** (EN) that meets your needs or work with your state VR agency.
- **Stay connected to your Employment Team** (WIPA, PABSS, EN, or VR) as you explore your work options.

# Check out a Career Fair!



Annual Diversity Employment Career Fair (in-person)

[www.citycareerfair.com/diversity](http://www.citycareerfair.com/diversity)

Hiring Our Heroes (in-person, for Veterans)

[www.uschamberfoundation.org/hiring-our-heroes](http://www.uschamberfoundation.org/hiring-our-heroes)

Veteran Recruiting (online, for Veterans)

[www.veteranrecruiting.com](http://www.veteranrecruiting.com)

Think Beyond the Label (online)

[www.thinkbeyondthelable.com/Start-Hiring/CareerFair.aspx](http://www.thinkbeyondthelable.com/Start-Hiring/CareerFair.aspx)

For more up to date information, subscribe to the Choose Work Blog at

[www.choosework.net/blog](http://www.choosework.net/blog)

# Where to Get More Information

Visit: [www.socialsecurity.gov/work](http://www.socialsecurity.gov/work) to find your local Employment Network and other Ticket to Work and Work Incentives information.

## Call:

Ticket to Work Help Line:

- 1-866-968-7842 (V)
- 1-866-833-2967 (TTY)



Helping You Today  
***So You Succeed Tomorrow***





## Question and Answer Period



- During the webinar, submit your questions on the webinar “[question and answer box](#)” or to [webinars@choosework.net](mailto:webinars@choosework.net)
- Anytime after the webinar day, email your questions to [support@chooseworkttw.net](mailto:support@chooseworkttw.net)

Questions?



Like us on Facebook: <http://www.facebook.com/choosework>



Follow us on Twitter: <http://www.twitter.com/chooseworkssa>

Ticket to Work Help Line: 1-866-968-7842 (V) or 1-866-833-2967 (TTY)



Helping You Today  
***So You Succeed Tomorrow***

