



Helping You Today  
*So You Succeed Tomorrow*

# TICKET TO WORK

---

**For People Who Have a Mental Illness:  
Support on Your Journey to Employment**

## **Work Incentives Seminar Event**

Date: Wednesday, May 27

Time: 3:00-4:30 p.m. EDT



# Accessing Today's Webinar

Toll-Free number: 1-855-749-4750

Access code: 649-678-314

Webinar PowerPoint, accessible PDF, and text are located at the URL link you received in your WISE confirmation and access letter.

# Webinar Accessibility

# Real-Time Captioning

Real-time captioning is provided during this webinar.

Closed captioning:

[http://www.edi.cornell.edu/captions.cfm?activity\\_id=5110](http://www.edi.cornell.edu/captions.cfm?activity_id=5110)

The captions can also be found in the Media Viewer panel, which appears in the lower-right corner of the webinar platform.

If you want to make the Media Viewer panel larger, you can minimize other panels like Chat, Q&A, and/or Participants.

The webinar presentation, transcript, and audio recording will be available in approximately two weeks at:

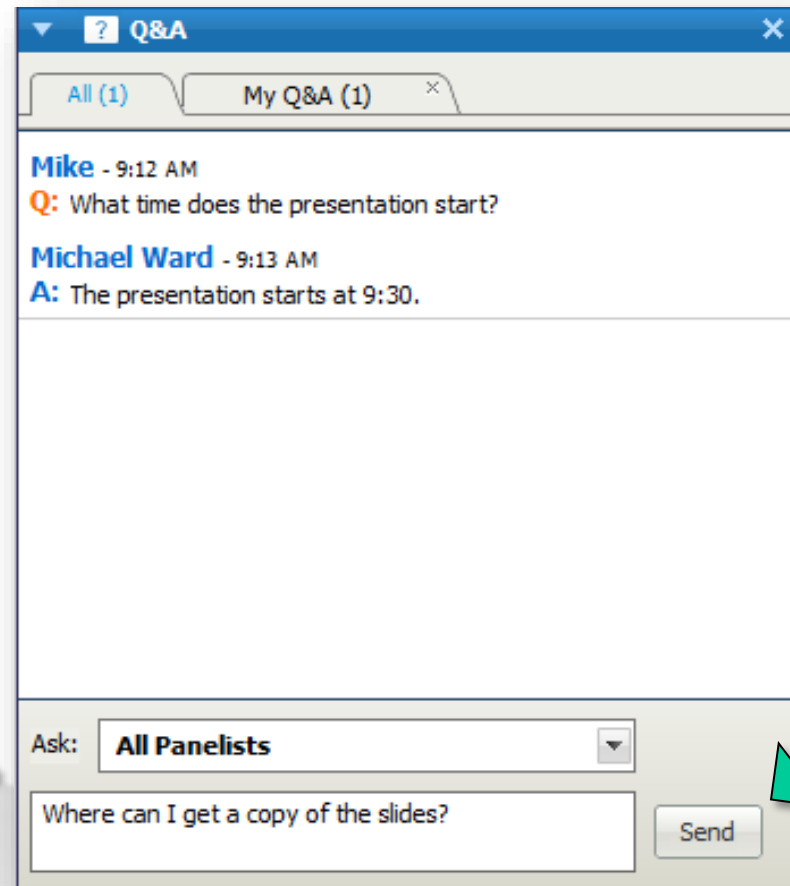
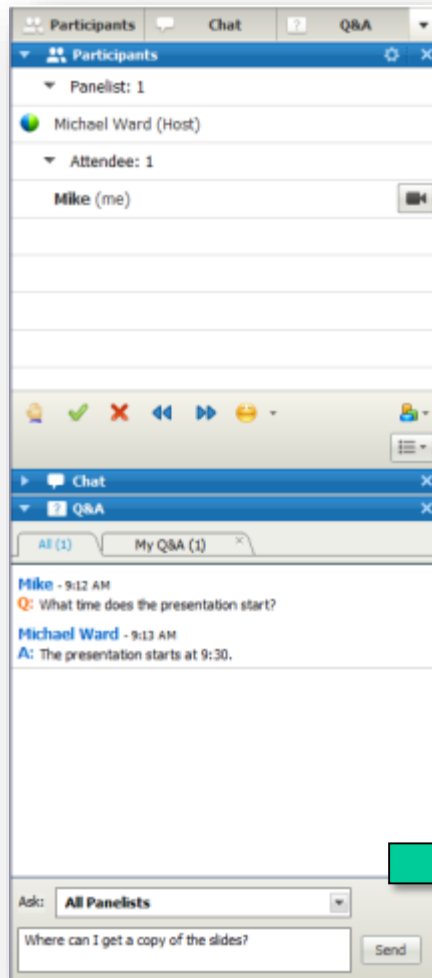
[www.ilr.cornell.edu/edi/m-wise-webinars.cfm](http://www.ilr.cornell.edu/edi/m-wise-webinars.cfm)

## Webinar Question & Answer Period

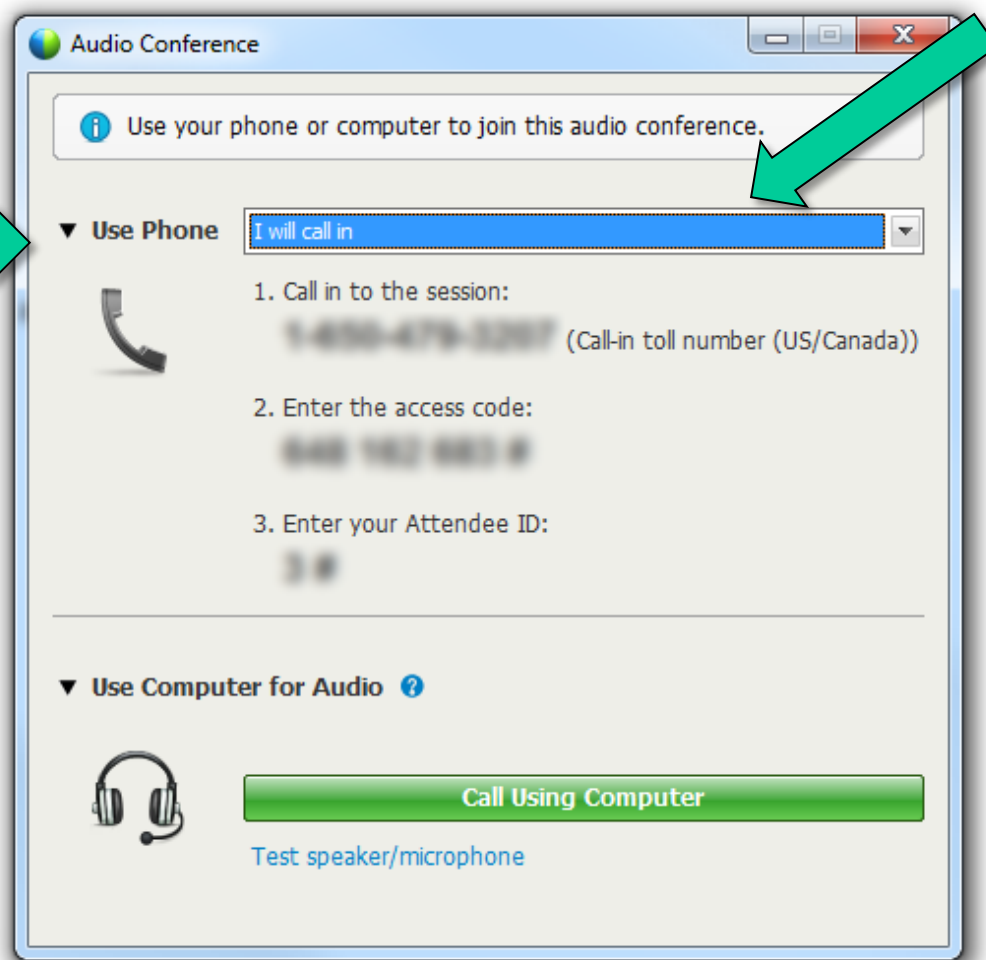
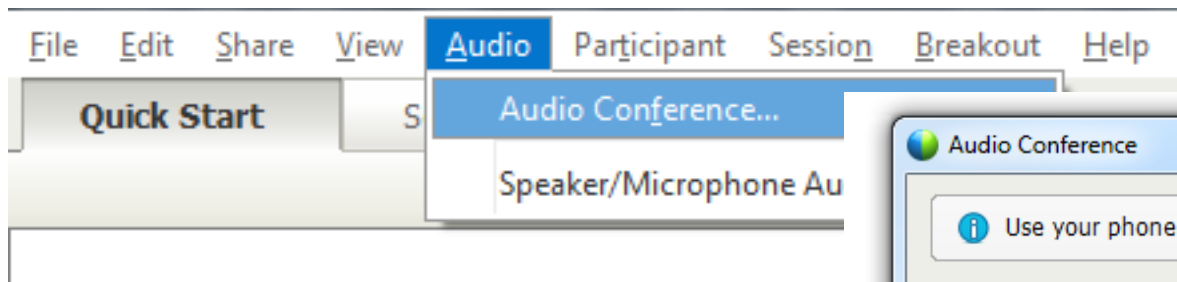
During the webinar, submit your questions on the webinar “question and answer box” or to [webinars@choosework.net](mailto:webinars@choosework.net)

Anytime after the day of the webinar, email your questions to [support@choosework.net](mailto:support@choosework.net)

# Audio and Questions Panels



# Audio and Questions Panels



# Agenda

## Welcome and Introductions

Ray Cebula, Employment & Disability Institute, Cornell University

## Mental Health: Common Myths

Kendra Berry, Aspire Indiana Works

## The Ticket to Work Program and Work Incentives

Kendra Berry

## Employment Networks

Sheriene Knox, Operation: Job Ready Veterans

## Resources

Ray Cebula

## Questions and Answers

Presentation Team





# Mental Illness Myths and Facts



**Mental health problems  
only affect a few people.**

## The answer is FALSE!



Mental health problems are **common**.

In 2011, about:

- **One in five** American adults experienced a mental health issue
- **One in 10** young people experienced a period of major depression
- **One in 20** Americans lived with a serious mental illness, such as schizophrenia, bipolar disorder, or major depression

Resource: [www.mentalhealth.gov](http://www.mentalhealth.gov)



People with mental health needs, even those who are managing their mental illness well, cannot tolerate the stress of holding down a job.

## The answer is FALSE!



- People with mental health problems can be **just as productive** as other employees.
- Employers who hire people with mental health problems report **good attendance** and **punctuality** as well as **motivation, good work, and years on the job that** on par with or greater than other employees.

Resource: [www.mentalhealth.gov](http://www.mentalhealth.gov)

People with mental health needs, even those who are managing their mental illness well, cannot tolerate the stress of holding down a job.



When employees with mental health problems receive effective treatment, it can result in:

- **Lower** total medical costs
- **Increased productivity**
- **Lower** absenteeism
- **Decreased** disability costs

Resource: [www.mentalhealth.gov](http://www.mentalhealth.gov)



There is little hope for people with mental health problems. Once a friend or family member develops mental health problems, he or she will never recover.

## The answer is FALSE!



- Studies show that people with mental health problems **get better** and many **recover** completely.
- Recovery refers to the process in which people are able to **live, work, learn,** and **participate** fully in their communities.
- There are more **treatments, services,** and **community support systems** than ever before, and they work for many people!



# The Ticket To Work Program



## Get to Know Ben



# Social Security Disability Benefit Programs



Social  
Security  
Disability  
Insurance

# Social Security Disability Benefit Programs



Supplemental  
Security  
Income

# Social Security Disability Benefit Programs



Social  
Security  
Disability  
Insurance



Supplemental  
Security  
Income

## Taking the Next Step

- Gathering information and resources is key to planning your journey toward employment.
- Ticket to Work and Work Incentives can help make your journey a smooth one.



## Starting the Journey

Only you can decide if work is  
the right choice for you.



## Why Choose Work?

- Earn more income
- Gain independence
- Meet new people
- Learn new skills





# The Ticket to Work Program

- Supports career development for people with disabilities who want to work
- Is for disability beneficiaries age 18 through 64
- Is free and voluntary





# Work Incentives

# Work Incentives

Work Incentives are special rules that allow you to:

- Receive training for new skills
- Improve the skills you already have
- Pursue your education
- Try different jobs
- Start a career
- Gain confidence



## Most Common Work Incentives



Earned  
Income  
Exclusion



Protection from  
Medical  
Continuing  
Disability  
Reviews



Trial Work  
Period



Continuation  
of Medicare  
Coverage



Section  
1619(b)  
Continued  
Medicaid  
Eligibility



Expedited  
Reinstatement



# Your Employment Team

Sheriene Knox  
Operation: Job Ready Veterans

# Employment Team



## Employment Networks (EN)

- Career Planning
- Job Leads and Job Placement
- Ongoing Employment Support
- Benefits Counseling



## State Vocational Rehabilitation (VR) Agencies

- Intensive Training
- Education
- Rehabilitation
- Career Counseling
- Job Placement Assistance
- Benefits Counseling



## Work Incentives Planning & Assistance (WIPA) projects

- Benefits Counseling
- Other Federal and State programs



## Protection and Advocacy for Beneficiaries of Social Security (PABSS)

- Individual Advocacy/Conflict Resolution

## Employment Networks (EN)



**ENs** are organizations and agencies that entered into an agreement with Social Security to provide

- **Employment services**
- **Vocational rehabilitation services**
- and **other types of support services** to people receiving Social Security disability benefits under the Ticket to Work program

Many **Vocational Rehabilitation Agencies** also serve as ENs.

## Employment Networks (EN)



EN services may include

- Career Planning
- Job Leads and Job Placement
- Ongoing Employment Support
- Benefits Counseling



# Selecting the Right EN



## Tips for selecting an EN

- Determine what kind of help you need
- Talk with multiple ENs
- Ask questions

## Find Help Tool

Visit: [www.choosework.net/findhelp](http://www.choosework.net/findhelp) to search for the right service provider for you.

You can search by:

- ZIP code
- Services offered
- Disability types
- Languages spoken
- Provider type (EN, VR, WIPA or PABSS)

# Operation: Job Ready Veterans

**OPERATION:  
JOB READY VETERANS**



# OPERATION: JOB READY VETERANS



- **OJRV** is a not-for-profit organization dedicated to preparing service members, veterans, military spouses and caregivers for **successful employment** by connecting them with employers that seek top quality, well-trained employees.
- OJRV makes a personal connection and assists veterans of all eras and ability levels with their **employment and career goals.**

# OPERATION: JOB READY VETERANS



OJRV works with veterans with a mental illness in a variety of ways, including

- Advice about finding a mentor,
- Discussion about job accommodations, and
- Help with additional questions veterans might have about returning to work.



## Resources





**1-800-273-TALK  
(1-800-273-8255)**

If you or someone you know is suicidal or in emotional distress, contact the **National Suicide Prevention Lifeline**.

Trained crisis workers are available to talk **24 hours a day, 7 days a week**.

Your **confidential** and **toll-free** call goes to the nearest crisis center in the Lifeline national network.

These centers provide crisis counseling and mental health referrals.



**1-800-273-8255**  
**Press 1**

The **Veterans Crisis Line** connects veterans in crisis and their families and friends with qualified, caring Department of Veterans Affairs responders through a confidential toll-free hotline, online chat, or text.

Veterans and their loved ones can call **1-800-273-8255** and **press 1**, chat online at **[www.veteranscrisisline.net](http://www.veteranscrisisline.net)**, or text **838255** to receive confidential support.



## SAMHSA Treatment Referral Helpline



Get general information on mental health and **locate treatment services in your area.**

**1-877-SAMHSA7  
(1-877-726-  
4727)**

Speak to a live person, Monday through Friday from 8 a.m. to 8 p.m. Eastern.

**MentalHealth.gov** provides one-stop access to information about mental health and mental health programs from the U.S. government.

MentalHealth.gov

MentalHealth.gov aims to **educate** and **guide**:

- The general public
- Health and emergency preparedness professionals
- Policy makers
- Government and business leaders
- School systems
- Local communities

**[www.mentalhealth.gov](http://www.mentalhealth.gov)**



[www.nami.org](http://www.nami.org)

The **National Alliance on Mental Illness (NAMI)** is dedicated to building better lives for the millions of Americans affected by mental illness.

NAMI **advocates** for access to services, treatment, supports and research and is committed to **raising awareness** and **building a community** of hope for all of those in need.



[www.mentalhealthamerica.net](http://www.mentalhealthamerica.net)

**Mental Health America (MHA)** is a community-based network dedicated to helping all Americans live mentally healthier lives. With a century of service and more than 300 affiliates across the country, MHA

- **advocates** for changes in policy;
- **educates** the public, and
- **delivers** urgently needed programs and services.

## New Resource: Finding Your Path to Employment with Ticket to Work



These videos can help all job seekers, especially those who are deaf or hard of hearing, learn about the Ticket to Work program and the resources available to find and keep a job.

View the videos online at  
[www.chooseworkttw.net/library/finding-your-path-to-employment-ASL-video](http://www.chooseworkttw.net/library/finding-your-path-to-employment-ASL-video)

## Join us for our next webinar!



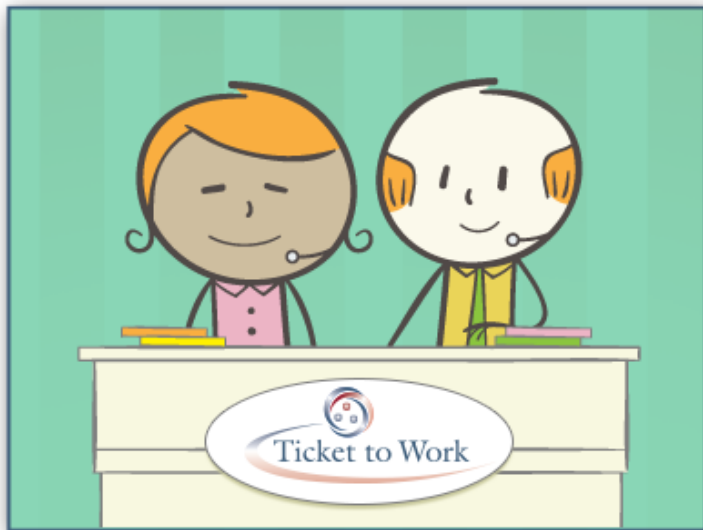
### Community Service as a Pathway to Employment for Young Adults: A Webinar for Social Security Disability Beneficiaries

Date: June 24, 2015

Time: 3:00 – 4:30 PM EDT

Register online at [www.choosework.net/wise](http://www.choosework.net/wise)  
or call 1-866-968-7842 (V) or 1-866-833-2967.

## For More Information



### Call the Ticket to Work Help Line:

- 1-866-968-7842 (V)
- 1-866-833-2967 (TTY)

### Visit:

- [www.socialsecurity.gov/work](http://www.socialsecurity.gov/work)

### Connect:



Like us on Facebook: [www.facebook.com/choosework](http://www.facebook.com/choosework)



Follow us on Twitter: [www.twitter.com/chooseworkssa](http://www.twitter.com/chooseworkssa)



Watch Ticket to Work Videos on YouTube: <http://www.youtube.com/choosework>



Please remember to take our webinar survey!

A link will pop up after the webinar, or you can visit [www.choosework.net/surveys/wise](http://www.choosework.net/surveys/wise).

