



Helping You Today *So You Succeed Tomorrow*

# **TICKET TO WORK**

## **Ticket to Work: Free Support Services For Young Adults in Transition**



**Work Incentives Seminar Event**



June 24, 2015  
3:00 – 4:30 PM

# Accessing Today's Webinar

Toll-Free number: 1-855-749-4750

Access code: 643-319-013

Webinar PowerPoint, accessible PDF, and text are located at the URL link you received in your WISE confirmation and access letter.

# Webinar Accessibility

# Real-Time Captioning

Real-time captioning is provided during this webinar.

Closed captioning:

[http://www.edi.cornell.edu/captions.cfm?activity\\_id=5111](http://www.edi.cornell.edu/captions.cfm?activity_id=5111)

The captions can also be found in the Media Viewer panel, which appears in the lower-right corner of the webinar platform.

If you want to make the Media Viewer panel larger, you can minimize other panels like Chat, Q&A, and/or Participants.

The webinar presentation, transcript, and audio recording will be available in approximately two weeks at:

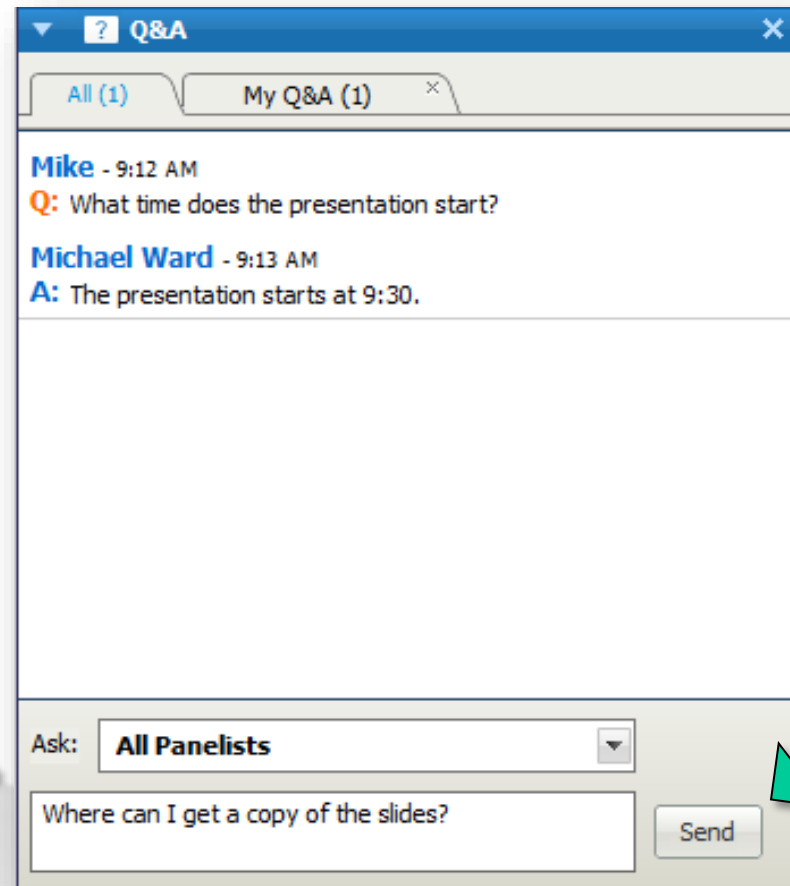
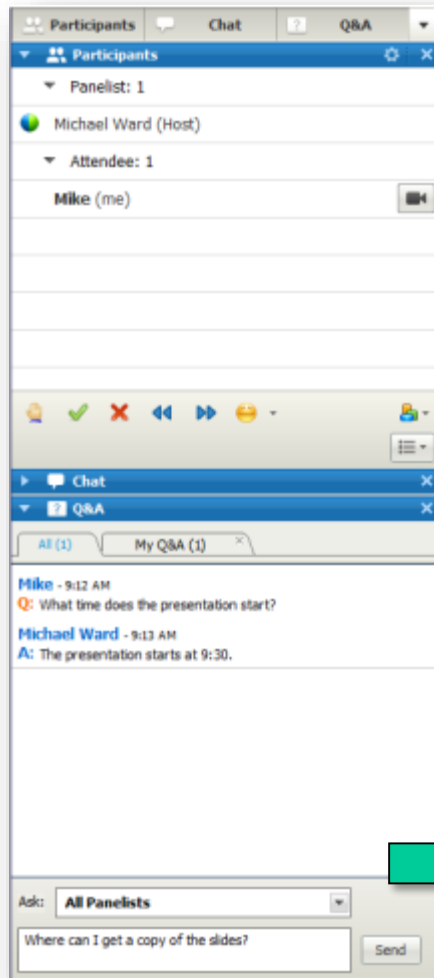
[www.ilr.cornell.edu/edi/m-wise-webinars.cfm](http://www.ilr.cornell.edu/edi/m-wise-webinars.cfm)

## Webinar Question & Answer Period

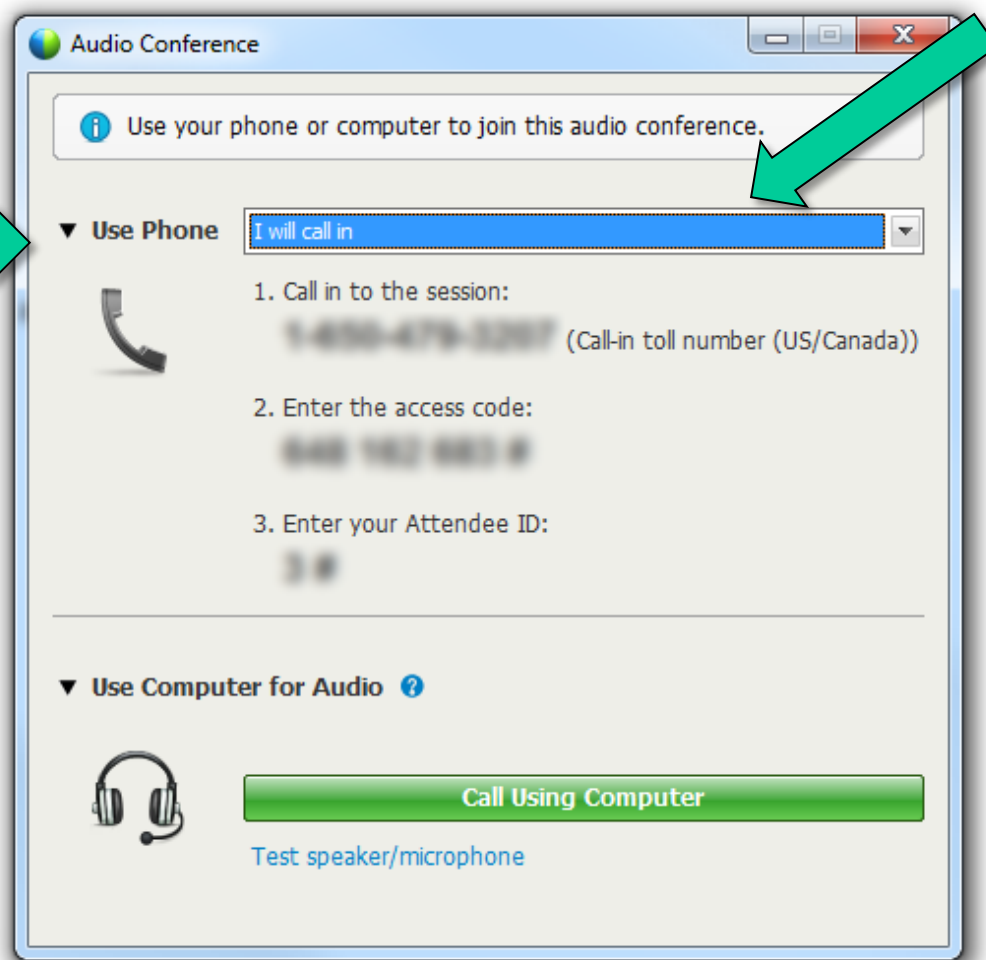
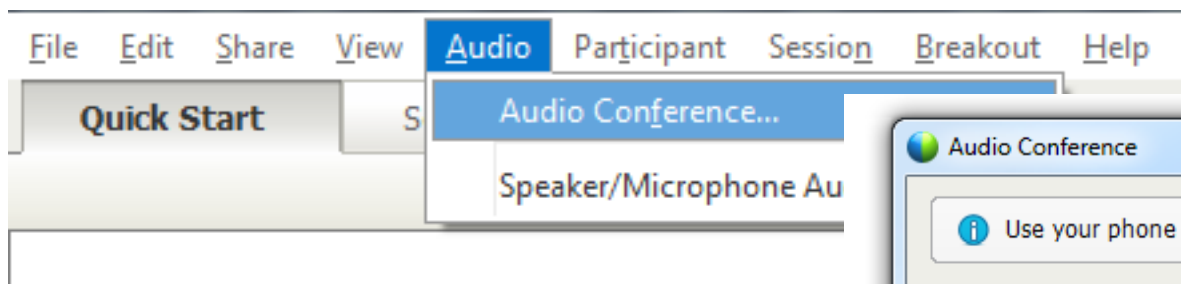
During the webinar, submit your questions on the webinar “question and answer box” or to [webinars@choosework.net](mailto:webinars@choosework.net)

Anytime after the day of the webinar, email your questions to [support@choosework.net](mailto:support@choosework.net)

# Audio and Questions Panels



# Audio and Questions Panels



# Agenda

## Welcome and Introductions

Ray Cebula, Employment & Disability Institute, Cornell University

## The Ticket to Work Program and Work Incentives for Young Adults

Shauna Dahlgren and Raina Gulbrandson, Nebraska Ticket to Work

## Your Employment Team

Shauna Dahlgren and Raina Gulbrandson, Nebraska Ticket to Work

## Additional Tips and Resources for Young Adults with Disabilities

Ray Cebula

## Questions and Answers

Presentation Team



# The Ticket To Work Program



## Get to Know Ben



# Social Security Disability Benefit Programs



Social  
Security  
Disability  
Insurance

# Social Security Disability Benefit Programs



Supplemental  
Security  
Income

# Social Security Disability Benefit Programs



Social  
Security  
Disability  
Insurance



Supplemental  
Security  
Income

## Taking the Next Step

- Gathering information and resources is key to planning your journey toward employment.
- Ticket to Work and Work Incentives can help make your journey a smooth one.



## Starting the Journey

Only you can decide if work is  
the right choice for you.



## Why Choose Work?

- Earn more income
- Gain independence
- Meet new people
- Learn new skills





# The Ticket to Work Program

- Supports career development for people with disabilities who want to work
- Is for disability beneficiaries age 18 through 64
- Is free and voluntary





# Work Incentives

# Work Incentives

Work Incentives are special rules that allow you to:

- Receive training for new skills
- Improve the skills you already have
- Pursue your education
- Try different jobs
- Start a career
- Gain confidence



## Work Incentives that can help young adults!



Student  
Earned  
Income  
Exclusion



Plan to Achieve  
Self-Support  
(PASS)



Section 301  
Continuing  
Benefits

## Work Incentives: Student Earned Income Exclusion (SEIE)



- If you are **under age 22** and are regularly attending school, you qualify!
- Social Security does not count up to **\$1,780** of earned income per month when figuring your SSI payment (maximum yearly exclusion = **\$7,180**).
- SEIE is applied **before** your general income exclusion or your earned income exclusion.



## Work Incentives: Student Earned Income Exclusion (SEIE)



You are regularly attending school if you take one or more courses and attend classes:

- In a **college** or **university** for at least **8 hours** a week, or
- In grades **7-12** at least **12 hours a week**, or
- In a **training** program to prepare for employment for at least **12 hours a week** (**15 hours a week** if the course involves shop practice).



## Work Incentives: Student Earned Income Exclusion (SEIE)



You are regularly attending school if you are **home taught** and:

- You are instructed in grades 7-12 at least **12 hours a week**, and
- The instruction is in accordance with a **home school law** of your state or jurisdiction.



## Work Incentives: Student Earned Income Exclusion (SEIE)



If you are **home taught** because of your disability,

- Your courses of study must be provided by a **school** (grades 7-12), college, university, or government agency, and
- A **home visitor** or **tutor** must direct the study.





## Work Incentives: Plan to Achieve Self Support (PASS)



- If you receive SSI or can become eligible for it, you could benefit from a **PASS plan**.
- A PASS allows you to **set aside** other income besides your SSI for a specified period of time so that you may pursue a work goal.
- When Social Security figures your SSI payment amount, they **do not count** the income that you set aside under your PASS plan.



## Work Incentives: Plan to Achieve Self Support (PASS)



A PASS plan can help you pay:

- For services to support **working from home**,
- For business **equipment** and **transportation**, and
- For **other goods and services** related to your work goals.



## Work Incentives: Plan to Achieve Self Support (PASS)



An Employment Network (EN), state Vocational Rehabilitation (VR) Agency, social worker, or benefits counselor can help you set up a PASS plan that must:

- Be in **writing** and **designed specifically for you**,
- Identify a **specific work goal** that you are capable of achieving, and
- Include a **specific timeframe** for reaching your work goal.



## Work Incentives: Plan to Achieve Self Support (PASS)



An Employment Network (EN), state Vocational Rehabilitation (VR) Agency, social worker, or benefits counselor can help you set up a PASS plan that must:

- Show what income you receive (other than SSI) and how that income will be used to reach your **work goal**, and
- Be **approved** and **reviewed** periodically.



# Work Incentives: Section 301

If Social Security determines you no longer have a disabling condition, your benefits usually stop.

- But, if you assign your Ticket to an EN or you are actively working with a VR Agency, your benefits **may continue**.
- Your participation must be **approved** by Social Security, and
- Your participation must **show progress** toward your work goal.

## Section 301



# Work Incentives: Section 301

## Section 301

Section 301 **may apply** even if you are not in the Ticket to Work program.

- Visit the Redbook online to learn more:  
<http://www.ssa.gov/redbook/eng/ssdi-and-ssi-employments-supports.htm> or
- Speak with an expert at the Ticket to Work Help Line at **1-866-968-7842 (V)** or **1-866-833-2967 (TTY)**.



# Your Employment Team

# Employment Team



## Employment Networks (EN)

- Career Planning
- Job Leads and Job Placement
- Ongoing Employment Support
- Benefits Counseling



## State Vocational Rehabilitation (VR) Agencies

- Intensive Training
- Education
- Rehabilitation
- Career Counseling
- Job Placement Assistance
- Benefits Counseling



## Work Incentives Planning & Assistance (WIPA) projects

- Benefits Counseling
- Other Federal and State programs



## Protection and Advocacy for Beneficiaries of Social Security (PABSS)

- Individual Advocacy/Conflict Resolution
- Legal Advocacy



## Employment Networks (EN)



**ENs** are organizations and agencies that entered into an agreement with Social Security to provide

- **Employment Services,**
- **Vocational rehabilitation services, and**
- Other types of **support services** to people receiving Social Security disability benefits under the Ticket to Work program

Many **Vocational Rehabilitation Agencies** also serve as ENs.

## Employment Networks (EN)



EN services may include

- Career Planning
- Job Leads and Job Placement
- Ongoing Employment Support
- Benefits Counseling

## ENs can help with your **résumé**!

Most jobs require a **résumé**, and it is often your first chance to **impress** a potential employer.

- Disability.gov has a directory of **résumé** resources online at <https://www.disability.gov/can-get-help-writing-resume-preparing-interviews/>.
- This page also includes tips on performing well during an interview!
- Be sure to **ask your EN** for advice about **résumés** and interview tips.



# Selecting the Right EN

## Tips for selecting an EN



- Determine **what kind of help** you need
- Talk with **multiple** ENs
- **Ask questions**

You might be interested in these resources:

- **Choosing the Right Employment Network for You**

<http://www.chooseworkttw.net/library/choosing-the-right-employment-network-for-you>

- **Finding an EN and Assigning Your Ticket Worksheet**

<http://www.chooseworkttw.net/library/finding-EN-assigning-your-ticket-worksheet>

## Find Help Tool

Visit: [www.choosework.net/findhelp](http://www.choosework.net/findhelp) to search for the right service provider for you.

You can search by:

- ZIP code
- Services offered
- Disability types
- Languages spoken
- Provider type (EN, Workforce EN, VR, WIPA or PABSS)

# Megan's Journey to Financial Independence

**2008**

Diagnosed with  
clinical depression

**2010**

Connected with  
an Employment  
Network

**2011**

Successfully working.  
Begins Extended Period  
of Eligibility (EPE), and  
cash benefits stop.

**2013**

Work ends during  
EPE. Cash benefits  
re-start without  
new application.

**2014**

Started her own  
small business

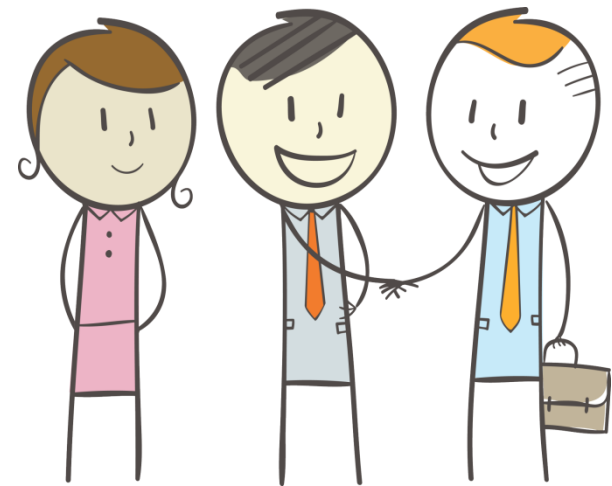


# Additional Tips and Resources for Young Adults with Disabilities

## Find a Mentor!

Advice, guidance, support and **connections** are just some of the benefits of having a mentor!

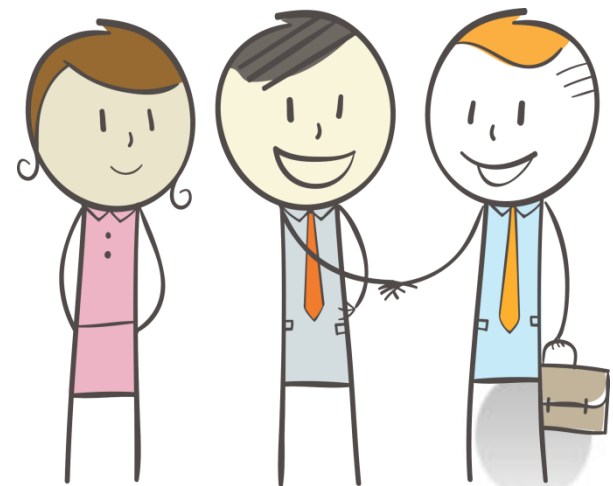
Having a mentor gives you the opportunity to **learn from someone** who knows about your field of interest and your individual experience.





## Find a Mentor!

The American Association of People with Disability's (AAPD) **Disability Mentoring Day (DMD)** program connects nearly 16,500 students and job seekers with disabilities to thousands of employers each year.

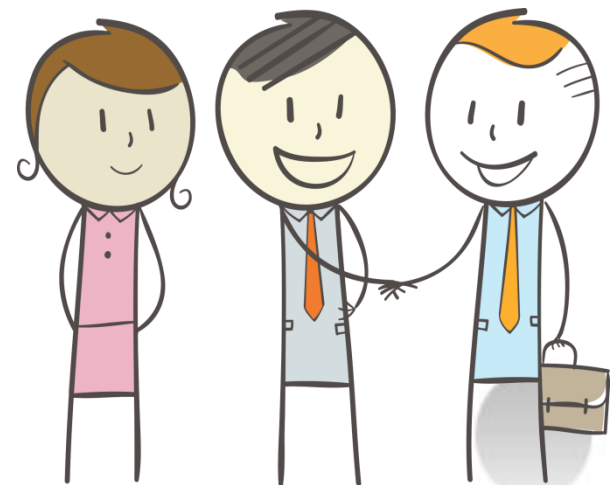


## Find a Mentor!

DMD, held the third Wednesday in October, promotes career development through **hands-on programs, job shadowing, and on-going mentoring.**

This experience has helped thousands of past participants develop lasting relationships and **secure internships or jobs.**

For more information, visit  
[www.aapd.com](http://www.aapd.com).



Search the WRP database to find  
the perfect fit for your needs

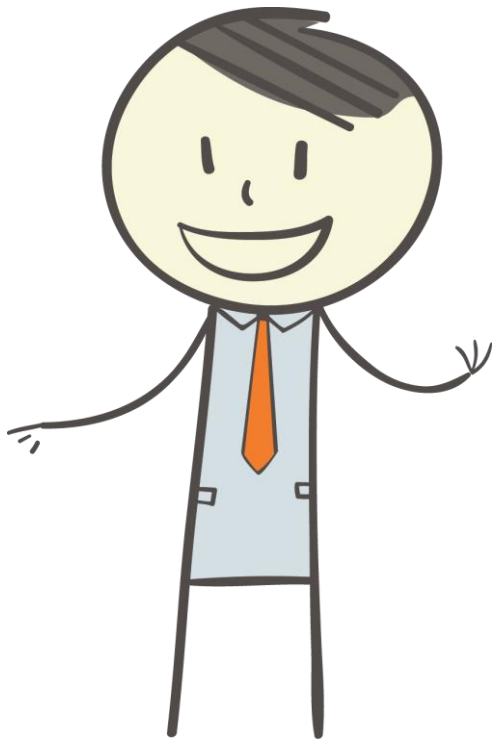
## New Resource: Finding Your Path to Employment with Ticket to Work



These videos may help all job seekers, especially those who are deaf or hard of hearing, learn about the Ticket to Work program and the resources available to find and keep a job.

View the videos online at  
[www.chooseworkttw.net/library/finding-your-path-to-employment-ASL-video](http://www.chooseworkttw.net/library/finding-your-path-to-employment-ASL-video)

## Share a Success Story!



Social Security's Ticket to Work Program may be looking for you!

- Are you ages **18 through 30**?
- Do you currently, or did you in the past, **participate in the Ticket to Work program**?
- We are looking for **young adults** who are willing to share the successes of transitioning from school to work and adulthood with the Ticket to Work program.

Help make someone else's transition to work easier! Submit your story to [stories@choosework.net](mailto:stories@choosework.net).

## Join us for our next webinar!



**More Jobs for People with Disabilities:  
What New Regulations Can Mean for You!**

**Date: July 22, 2015**

**Time: 3:00 – 4:30 PM EDT**

**Register online at [www.choosework.net/wise](http://www.choosework.net/wise)  
or call 1-866-968-7842 (V) or 1-866-833-2967.**



## For More Information



### Call the Ticket to Work Help Line:

- 1-866-968-7842 (V)
- 1-866-833-2967 (TTY)

### Visit:

- [www.socialsecurity.gov/work](http://www.socialsecurity.gov/work)

### Connect:



Like us on Facebook: [www.facebook.com/choosework](http://www.facebook.com/choosework)



Follow us on Twitter: [www.twitter.com/chooseworkssa](http://www.twitter.com/chooseworkssa)



Watch Ticket to Work Videos on YouTube: <http://www.youtube.com/choosework>

# Tell us what you thought!

Please remember to take our webinar survey!

A link will pop up after the webinar, or you can visit [www.choosework.net/surveys/wise](http://www.choosework.net/surveys/wise)

