



Helping You Today  
*So You Succeed Tomorrow*



# Ticket to Work for Young Adults

Date: Wednesday, June 28

Time: 3-4:30 p.m. ET

## Accessing Today's Webinar

- You can manage your audio using the audio option at the top of your screen (it will look like a microphone or telephone icon).
- All attendees will be muted and we encourage you to attend by choosing “**listen only**” from the audio menu. This will enable the sound to be broadcast through your computer, so please make sure your **speakers are turned on or your headphones are plugged in.**

## Accessing Today's Webinar (continued)

If you do not have sound capabilities on your computer or prefer to listen by phone, dial:

**Toll-Free number: 1-800-832-0736**

**Access code: 8458462#**

# Webinar Accessibility

# Captioning

Real-time captioning is provided during this webinar.

- The captions can be found in **Captioning pod**, which appears below the slides.
- You can also access captioning **online**:  
[www.captionedtext.com/client/event.aspx?CustomerID=846&EventID=3264931](http://www.captionedtext.com/client/event.aspx?CustomerID=846&EventID=3264931)

## Questions and Answers (Q&A)

- Please use the **Q&A pod** to submit any questions you have during the webinar and we will direct the questions accordingly during the Q&A portion.
- If you are listening by phone and not logged into the webinar, you may also ask questions by emailing questions to:  
**[webinars@choosework.net](mailto:webinars@choosework.net)**

**Please note:** This webinar is being recorded and the archive will be available within two weeks on the Choose Work website at: **[www.choosework.net/webinars-tutorials/webinar-archives.html](http://www.choosework.net/webinars-tutorials/webinar-archives.html)**.



## Technical Assistance

If you experience any technical difficulties during the webinar,  
please use the Q&A box to send a message or email:  
**[webinars@choosework.net](mailto:webinars@choosework.net)**

# Agenda

Welcome and Introductions

Moderator:

Nancy Boutot, NDI Consulting

Presenters:

Tad Asbury, Marriott Foundation for People with Disabilities

Debbie Baker, Office of Vocational Rehabilitation (Florida)



## Topics

- Social Security Disability Benefits
- The Ticket to Work Program
- Work Incentives
- The Marriott Foundation for People with Disabilities
- Tips for Young Adults as You Transition to the World of Work
- Other Resources
- Questions and Answers

# Social Security Disability Benefits



# Social Security Disability Benefit Programs



Social  
Security  
Disability  
Insurance

# Social Security Disability Benefit Programs



Supplemental  
Security  
Income

## Social Security Disability Benefit Programs



Social  
Security  
Disability  
Insurance



Supplemental  
Security  
Income

## Starting the Journey

Only you can decide if work is the right choice for you.



## Why Choose Work?

- Earn more income
- Gain independence
- Meet new people
- Learn new skills
- Reach your goal



# What Is the Ticket to Work Program?

Ticket to Work:

- Supports career development for people with disabilities who want to work
- Is for Social Security disability beneficiaries age 18 through 64
- Is free and voluntary





## Taking the Next Step

- Gathering information and resources is key to planning your journey toward employment.
- Ticket to Work and Work Incentives can help make your journey a smooth one.



## For More Information

Call the Ticket to Work Help Line

(8 a.m. – 8 p.m. ET):

- 1-866-968-7842
- 1-866-833-2967 (TTY)

Visit the Ticket to Work Site:

- [www.ssa.gov/work](http://www.ssa.gov/work)



# Work Incentives



## Work Incentives

Work Incentives are special rules that allow you to:

- Receive training for new skills
- Improve the skills you already have
- Pursue your education
- Try different jobs
- Start a career
- Gain confidence



# Work Incentives: Plan to Achieve Self Support (PASS)

(Slide 1 of 4)

- If you receive SSI or can become eligible for it, you could benefit from a PASS plan.
- A PASS allows you to set aside income (other than your SSI) for a specified period of time so that you may pursue a work goal.
- When Social Security figures your SSI payment amount, they do not count the income that you set aside under your PASS plan.



## Work Incentives: Plan to Achieve Self Support (PASS)

(Slide 2 of 4)

APASS plan can help you pay:

- For services to support working from home
- For business equipment and transportation
- For other goods and services related to your work goals



# Work Incentives: Plan to Achieve Self Support (PASS)

(Slide 3 of 4)

An EN, State Vocational Rehabilitation (VR) agency, social worker, or Benefits Counselor can help you set up a PASS plan that must:

- Be in writing and designed specifically for you
- Identify a specific work goal that you are capable of achieving
- Include a specific timeframe for reaching your work goal.



# Work Incentives: Plan to Achieve Self Support (PASS)

(Slide 4 of 4)

An EN, VR, social worker, or Benefits Counselor can help you set up a PASS plan that must:



- Show what income you receive (other than SSI) and how that income will be used to reach your work goal; and
- Be approved and reviewed periodically by Social Security.







# Bridges from School to Work

A program of the Marriott Foundation for People with Disabilities

## Marriott Foundation for People with Disabilities

### The Foundation:

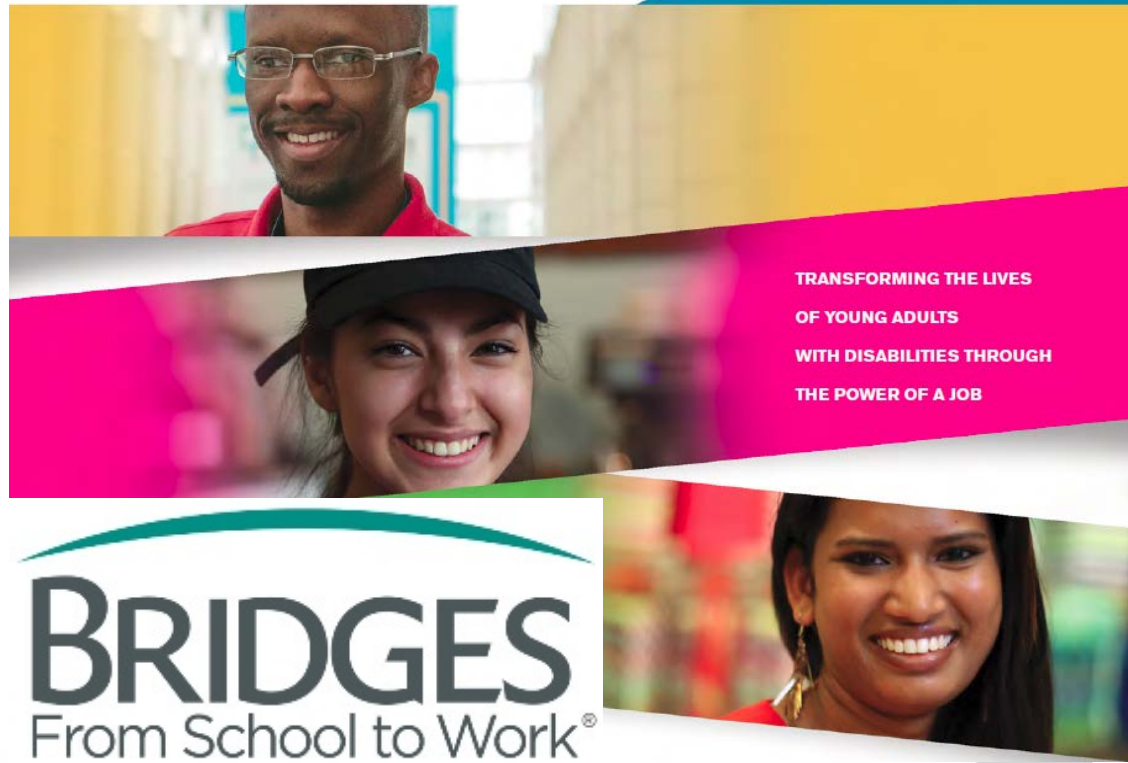
- Was established in 1989 by Marriott family to enhance employment opportunities for young adults with disabilities
- Emphasizes competitive job placement, retention, vocational growth and advancement
- Is a 501 (c)(3) non-profit

The signature program of the Foundation:  
Bridges From School to Work



# What is Bridges from School to Work?

**The Mission:**  
Transform the lives of  
young adults with  
disabilities through  
the power of a job.



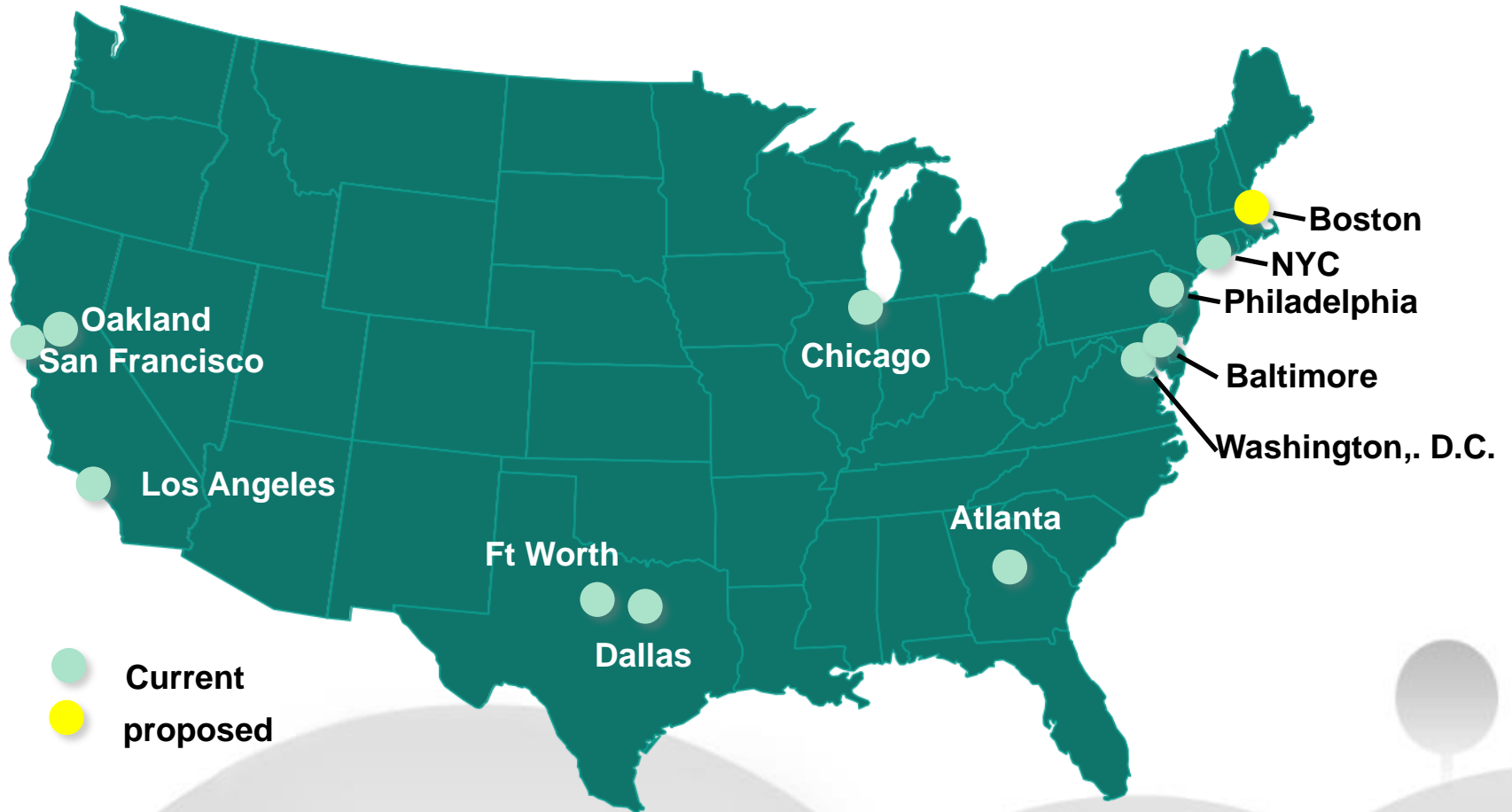
## What is Bridges from School to Work? (Continued)

Bridges from School to Work is:

- Employer-driven
- Emphasizes abilities rather than disabilities
- Matches pre-screened youth with appropriate jobs
- Provides long-term supports during employment for youth and employer



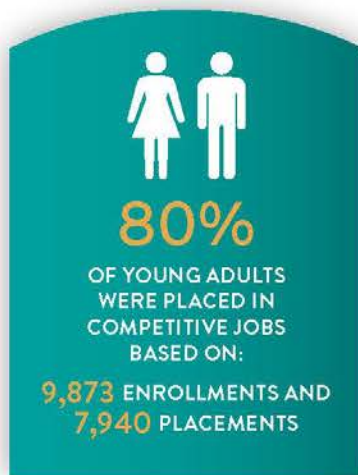
# Bridges from School to Work





## PROGRAM YEARS 2006-2015

TOTAL YOUNG ADULTS SERVED



SINCE 1990 BRIDGES HAS ENROLLED OVER **21,000** YOUNG ADULTS AND PLACED OVER **16,300** WITH MORE THAN **4,200** EMPLOYERS.



*Transforming the lives of young adults with disabilities through the power of a job.*

Learn more!



# BRIDGES

From School to Work<sup>®</sup>

[www.bridgestowork.org](http://www.bridgestowork.org)

# What is Transition?



## Setting the Stage

It's a big, exciting, and complex world of work out there!

Jobs of today and tomorrow include:

- A **variety** of job types and skills needed
- A complex work world **full of opportunities**
- A **diverse** workforce

## Setting the Stage (Continued)

What is the difference between transition and change?

### Change

- Happens externally, often quickly

### Transition

- Happens internally, occurs more slowly
- Begins with an ending and ends with a beginning

## What are the Phases of Transition?

There are several phases of transition:

- Ending, losing, and letting go
- The neutral zone
- The new beginning

# Tips for Young Adults as You Transition to the World of Work

# Tip #1: Work Early, Work Often

## Explore!

- Volunteer
- Internship
- Summer job
- Full-time job
- Part-time job



## Tip #2: Master the Basics

Remember three basic concepts:

- **Knowledge**
- **Communications**
- **Respect**

## Tip #2: Master the Basics

### Knowledge: Know Your “Self”

- Inventories
- Personality
- Interest
- Strengths
- Career
- Bottom line
  - » Inventories can create a personal vocabulary
    - » Words/ ideas to use to talk about yourself: self-awareness is key
    - » Targets the job search

- *Knowledge*  
- *Communications*  
- *Respect*

## Tip #2: Master the Basics

**Knowledge:** Know the company or the organization where you would like to work.

- Who are they and who is their customer?
- What do they do?
- How do they operate (work)?
  - » Do research
- What are the company's core values?
- Know the landscape

- *Knowledge*  
- *Communications*  
- *Respect*



## Tip #2: Master the Basics

### Communications: A Reflection of You

- Resume
  - » Your resume makes you stand out to future employers.
  - » Seek feedback from others and be sure to proofread!
- References
  - » Realistic advocates who know you
- Social media
  - » How do you look online?
  - » Facebook, LinkedIn, etc.
  - » Using social media as a marketing tool

- Knowledge
- **Communications**
- Respect



## Tip #2: Master the Basics

### Communications: First Impression

- Look and act the part
- Disability Disclosure? Have a plan
  - » Know your rights and the rules
  - » Consider and practice your approach in advance
  - » There are special rules for federal contractors
  - » Seek feedback from others and be sure to proofread
- Ask for help
  - » Seek assistance as needed

- Knowledge  
- **Communications**  
- Respect



## Tip #2: Master the Basics

### Respect

- Be polite and attentive
- Make eye contact if you are able
- Listen
- Avoid distractions such as your cell phone
- Get contact information and write a thank you note

- Knowledge  
- Communications  
- **Respect**

## Tip #3: Show What You Know

It's not what you know. It's what you DO with what you know!

**STAR** Interview

Situation

Task

Action

Result

An interview is a chance to tell your story. STARs can help you tell it!

## Tip #3: Show What You Know

An interviewer might ask you about your experience related to:

- Making decisions
- Working in teams
- Dealing with stress
- Helping customers
- Managing time
- Taking action

Situation  
Task  
Action  
Result

## Tip #3: Show What You Know

### Be Ready!

- Assessments: reality of the work world
  - » Pre-employment assessments and online applications
- Background/ Credit/ Drug Screening

## Tip #4: Practice Success Daily

The keys to job success are:

- Know your work schedule
- Be at work every day you are scheduled
- Be on time
- Be organized
- Follow the dress code



## Tip #4: Practice Success Daily (continued)

More keys to job success are:

- No cell phone or texting
- No “favors” for friends or family
- Have a good, positive attitude
- Take initiative
- Avoid drama and rumor mills
- Be professional and work hard





## Summary: Tips as You Transition to Work

- ✓ Work Early, Work Often
- ✓ Master the Basics
- ✓ Show What You Know
- ✓ Practice Success Daily

# Additional Resources

## Youth Transitions Collaborative

The Youth Transitions Collaborative includes a toolkit for young adults with a disability who want to connect to jobs and careers. The toolkit will lead you along your path and provide the information you need to make informed decisions, one step at a time.

[toolkit.disabilitypolicyworks.org](http://toolkit.disabilitypolicyworks.org)

policyworksyour PATHWAY to  
SUCCESS

## Career Onestop

The Career Onestop is a partner of the American Job Center Network. **GetMyFuture** is a one-stop site for young adults to find career, training, and job search resources.

Check out [www.careeronestop.org/getmyfuture/](http://www.careeronestop.org/getmyfuture/) to take an interest assessment, learn about careers, explore education and training options, and to find information about obtaining/maintaining a job.

For more young adult resources, visit  
[www.careeronestop.org/Resourcesfor/YoungAdult/young-adult.aspx](http://www.careeronestop.org/Resourcesfor/YoungAdult/young-adult.aspx)

## My Next Move



My Next Move: is an interactive tool for job seekers and students to learn more about career options. It contains tasks, skills, and salary information for more than 900 different careers. Find a career through a keyword search, browse industries that employ different types of workers or use the O\*NET Interest Profiler. The O\*NET Interest Profiler is a tool that offers personalized career suggestions based on your interests and level of work experience.

[www.mynextmove.org/](http://www.mynextmove.org/)

## Find Help Tool

Visit: [www.choosework.net/findhelp/](http://www.choosework.net/findhelp/) to search for the right service provider for you.

### Search by:

- ZIP code
- Services offered
- Disability type
- Languages spoken
- Provider type (EN, Workforce EN, VR, Work Incentives Planning and Assistance or Protection and Advocacy for Beneficiaries of Social Security)

## For More Information



Call the Ticket to Work Help Line:

1-866-968-7842

1-866-833-2967 (TTY)

Visit the Ticket to Work Site:

[www.ssa.gov/work](http://www.ssa.gov/work)

### Connect:

 Like us on Facebook: [www.facebook.com/choosework](http://www.facebook.com/choosework)

 Follow us on Twitter: [www.twitter.com/chooseworkssa](http://www.twitter.com/chooseworkssa)

 Watch Ticket to Work Videos on YouTube: <http://www.youtube.com/choosework>

 Follow us on LinkedIn: <https://www.linkedin.com/company/ticket-to-work>

## Join Us for Our Next WISE Webinar!



**Date: Wednesday, July 19, 2017**

**Time: 3-4:30 p.m. ET**

**Register online at: [www.choosework.net/wise](http://www.choosework.net/wise)  
or call 1-866-968-7842 or 1-866-833-2967 (TTY)**



# Questions?



# Tell us what you think!

Please remember to take our webinar survey!

A link will pop up after the webinar or visit:  
[www.choosework.net/surveys/wise](http://www.choosework.net/surveys/wise).

