



Helping You Today  
So You Succeed Tomorrow



# Ticket to Work: Career Preparation for College Students with Disabilities

**Date:**  
Wednesday,  
December 18

**Time:**  
3-4:30 PM ET



Produced at U.S. taxpayer expense

Produced at U.S. taxpayer expense.

# Accessing Today's Webinar (Slide 1 of 3)

You can manage your audio using the audio option at the top of your screen (it will look like a microphone or telephone icon).



# Accessing Today's Webinar (Slide 2 of 3)

All attendees will be muted, and we encourage you to attend by choosing “**listen only**” from the audio menu. This will enable the sound to be broadcast through your computer, so please make sure your **speakers are turned on or your headphones are plugged in.**



Join Audio Conference

How would you like to join the meeting's audio conference?

☒ Dial-out [Receive a call from the meeting]

+1 (USA)

☐ Dial-in to the Audio Conference via Phone

Join Listen Only

# Accessing Today's Webinar (Slide 3 of 3)

If you do not have sound capabilities on your computer or prefer to listen by phone, dial:

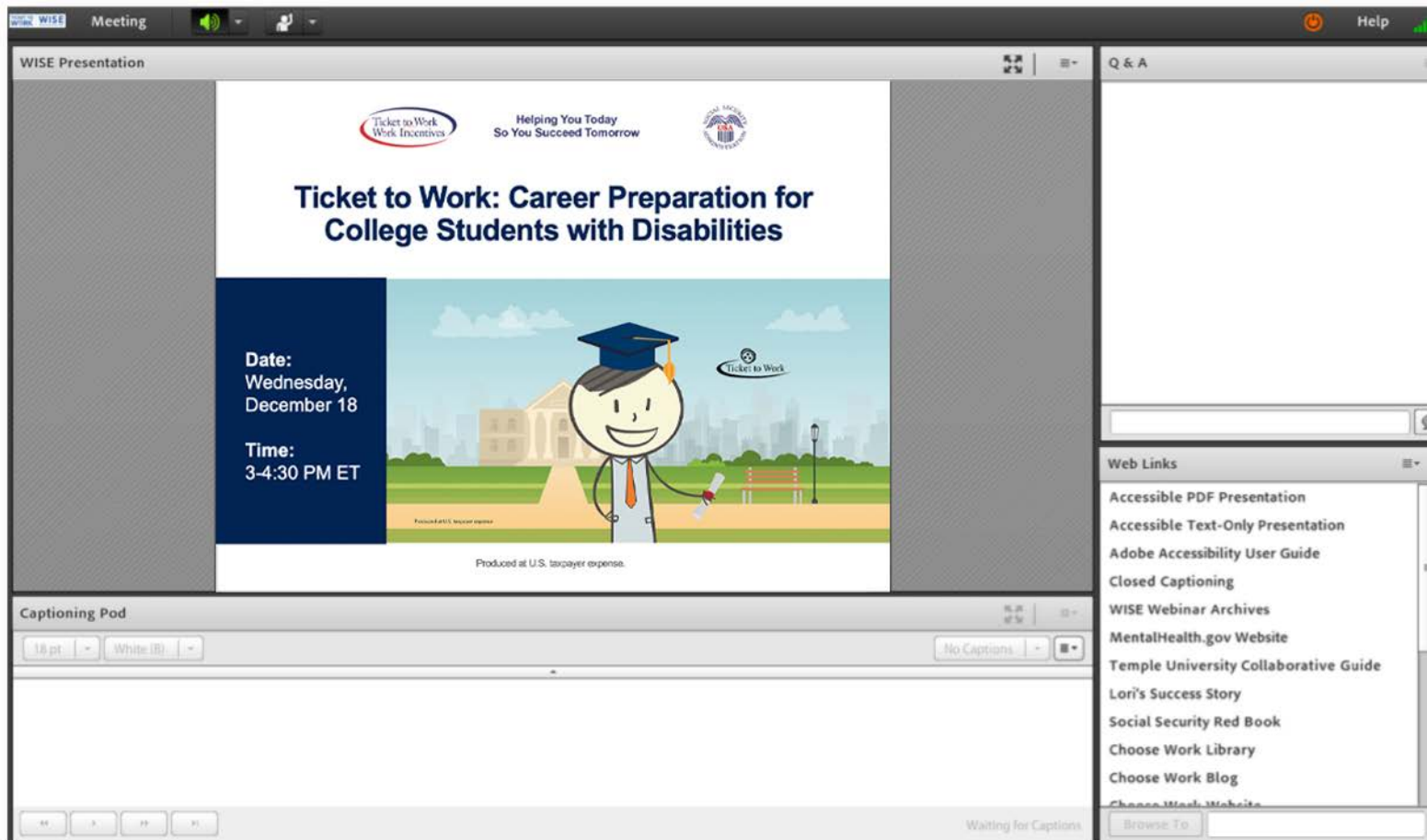
Toll-free number: **1-800-832-0736**

Access code: **4189148#**

# Webinar Accessibility



# Adobe Connect Platform



# Adobe Connect Accessibility User Guide

Should you need assistance navigating Adobe Connect, the link below directs you to an Accessibility User Guide complete with a list of controls.

New Keyboard Shortcuts	
CTRL + M	Toggle Microphone on (locked) or off.
CTRL + UP ARROW	Toggle Raise Hand Status.
CTRL + .	Toggle Full Screen Mode. Applies to currently selected Share Pod.
CTRL + '	Promote to Host. Requires selected attendee(s) in the Attendee List.
CTRL + ]	Demote to Participant. Requires selected attendee(s) in the Attendee List.
CTRL + /	Promote to Preesenter. Requires selected attendee(s) in the Attendee List.
CTRL + ,	Start/Stop Recording (toggle). For Start, brings up the Start Recording Dialog.
CTRL + \	End Meeting. Brings up the End Meeting Dialog.
CTRL + [	Start/Stop Desktop Sharing. Applies to currently selected Share Pod.
CTRL + SPACE	Opens up left most menu for keyboard navigation.

<http://bit.ly/adobe-accessibility>

# Captioning

- Real-time captioning is provided during this webinar
- The captions can be found in the **Captioning pod**, which appears below the slides
- You can also access captioning online:  
<http://bit.ly/captions-dec19>



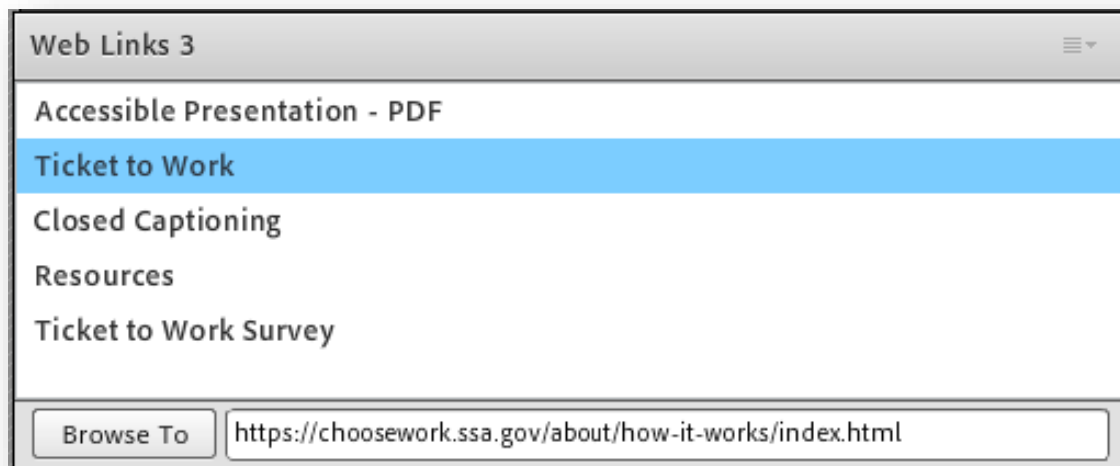
# Questions and Answers (Q&A)

- For Q&A: Please use the **Q&A pod** to submit any questions you have during the webinar, and we will direct the questions accordingly during the Q&A portion
- If you are listening by phone and not logged in to the webinar, you may also ask questions by emailing questions to [webinars@choosework.ssa.gov](mailto:webinars@choosework.ssa.gov)



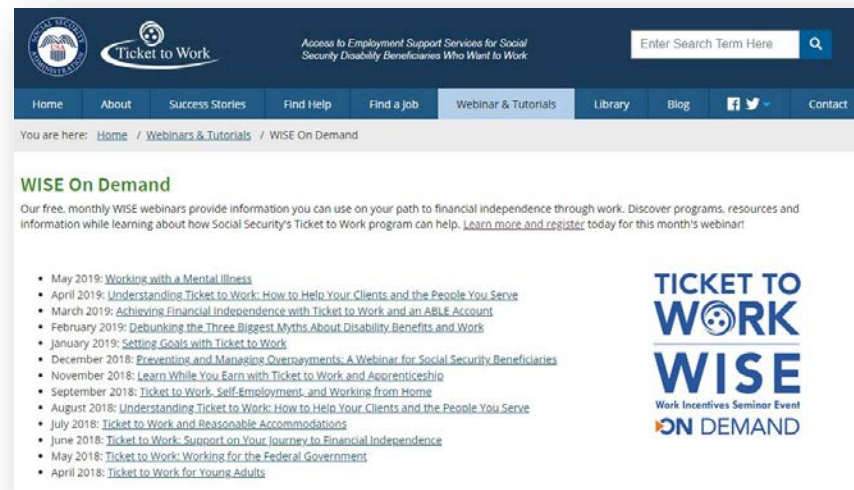
# Webinar Online Resources

- Please use the **Web Links pod** to find the resources presented during today's webinar
- If you are listening by phone and not logged in to the webinar, you may email [webinars@choosework.ssa.gov](mailto:webinars@choosework.ssa.gov) for a list of available resources



# Archived Events

**Please note:** This webinar is being recorded, and the archive will be available within 2 weeks on the Choose Work website at [http://bit.ly/WISE\\_OnDemand](http://bit.ly/WISE_OnDemand).



# Technical Assistance

If you experience any technical difficulties during the webinar, please use the **Q&A pod** to send a message, or you may email [webinars@choosework.ssa.gov](mailto:webinars@choosework.ssa.gov).



# Presenters

## Welcome and Introductions

Moderator: Sarah Hyland, WISE Moderator

Presenter: Raymond A. Cebula, III, J.D., Cornell University

# Welcome!

Thank you for joining us! Today, we'll discuss how Social Security's Ticket to Work (Ticket) program can help you and answer questions related to:

- The Ticket program's features
- Social Security Work Incentives
- How Ticket program service providers and Social Security Work Incentives can help college students prepare to transition to the workforce



# Objectives

At the close of today's webinar, you will:

- Better understand the Ticket program and other Work Incentives
- Know how to choose a service provider to help you meet your employment goals
- Be able to identify resources to support your financial independence and successful transition to the workplace after college



# **Ticket to Work Program: Support on Your Journey to Work**





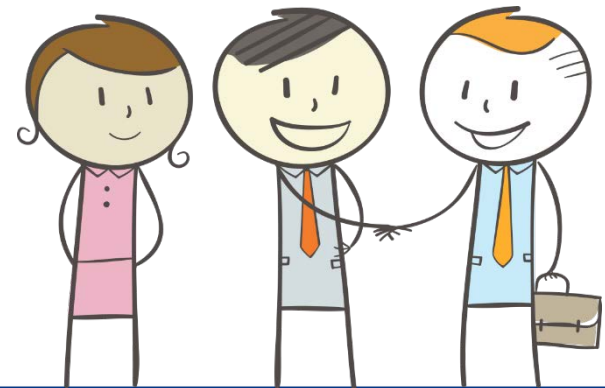
# Social Security Disability Benefits Program



**Social Security Disability Insurance (SSDI)**



**Supplemental Security Income (SSI)**



# Starting the Journey

Only you can decide if work is the **right choice for you.**



# Why Choose Work?

For college students receiving Supplemental Security Income (SSI) or Social Security Disability Insurance (SSDI), the Ticket program offers resources to help identify transferable skills, prepare for and find job opportunities, and transition to the workplace after college.



# Why Ticket to Work?

- Earning a living through employment is not something everyone can do, but it may be right for you. Once people understand the many free services and supports available to them, they often find that the rewards far outweigh the risks.
- If you take the time to learn about the employment services and supports available through the Ticket program, you may be surprised! We're here to help you on your journey to financial independence.



# What Is the Ticket to Work Program? (Slide 1 of 2)

## Ticket to Work:

- Is a free and **voluntary** Social Security program
- Offers **career development** for people ages 18 through 64 who receive Social Security disability benefits and want to work



# What Is the Ticket to Work Program? (Slide 2 of 2)

Ticket to Work connects you with **free employment services** to help you:

- Decide if working is right for you
- Prepare for work
- Find a job
- Succeed at work



# How the Ticket Program Works

If you decide to participate, you may choose to receive services from authorized Ticket to Work service providers like **Employment Networks (EN)** or your **State Vocational Rehabilitation (VR) agency**.



# Employment Networks (ENs) (Slide 1 of 2)

An EN is a private or public organization that has an agreement with Social Security to provide free employment support services to people who are eligible for the Ticket program.

- Many state public workforce systems, such as American Job Centers, are Workforce ENs





# Employment Networks (ENs) (Slide 2 of 2)

An EN's service area may cover:

- The local community
- An entire state
- Multiple states
- The whole country

An EN may offer its services:

- In person
- Virtually, by phone or email
- Both in person and virtually



# How Can Working with an EN Help You?

Services and supports are designed to help you on the path to financial independence through work and can include helping you to:

- Identify your work goals
- Write and review your resume
- Prepare for interviews
- Request reasonable accommodations
- Receive benefits counseling



# Workforce Employment Networks

Some ENs are a part of the Public Workforce System, a network of federal, state, and local offices that supports all qualified people with their work goals.



# State Vocational Rehabilitation (VR) Agency

A State VR agency provides a wide variety of services to help people with disabilities return to work, enter new lines of work, or enter the workforce for the first time.

- Some states have separate VR agencies that serve individuals who are blind or visually impaired



# How Can Working with a State VR Agency Help You?

Many services are similar to what you can receive through an EN, but a State VR agency may also be able to help you with:

- Vocational rehabilitation
- Training and education

Similar to ENs, State VR agencies can also offer benefits counseling



# **Ticket to Work and Work Incentives**



# Student Earned Income Exclusion (SEIE)

- SEIE allows a person who is under age 22 and regularly attending school (such as in a college or university for at least 8 hours a week) to exclude some earnings from income.
- Monthly and annual exclusion amounts are adjusted based on the cost-of-living index.
- The maximum amount of the SEIE in 2019 is \$1,870 per month and not more than \$7,550 per year. For 2020, the SEIE amounts increase by 1.6 percent to \$1,900 per month and not more than \$7,670 per year.

You are eligible for SEIE if you receive SSI.



# Plan to Achieve Self-Support (PASS) (Slide 1 of 2)

Allows an individual with a disability to set aside money and things he or she owns to pay for items or services needed to achieve a work goal. Examples include:

- Supplies to start a business
- School expenses
- Transportation
- Uniforms
- Equipment and tools





# Plan to Achieve Self-Support (PASS) (Slide 2 of 2)

- You may be eligible for a PASS if you receive either SSI or SSDI.
- If you receive SSI, you must use income besides your SSI payment, such as SSDI cash benefits, income from a job or self-employment or unearned income like veterans' benefits, to fund your PASS.
- If you receive SSDI and can afford to do so, you can set-aside nearly all of your SSDI benefit in your PASS. Because SSA does not count the portion of your SSDI you are using toward your PASS, this could reduce your “countable income” enough to become eligible for SSI.

# Impairment-Related Work Expenses (IRWE) (Slide 1 of 2)

Impairment-Related Work Expenses (IRWE) are costs for items or services that you need in order to work because of your disability. You are eligible for IRWE if you receive either SSI or SSDI.



# Impairment-Related Work Expenses (IRWE) (Slide 2 of 2)

An IRWE must meet all of the following criteria:

- The item(s) or service(s) enable you to work
- You need the item or service because of a physical or mental impairment
- You pay for the item or service yourself and are not reimbursed by another source (such as Medicare, Medicaid, or a private insurance carrier)
- The cost is "reasonable," meaning that the cost represents the standard charge for the item or service in your community

# Continued Medicaid Eligibility (Section 1619(b))

To continue Medicaid coverage, a person must meet all of the following:

- Be eligible for an SSI payment for at least 1 month
- Still meet the disability requirement
- Still meet all other non-disability SSI requirements
- Need Medicaid benefits to continue to work
- Have gross earnings that are insufficient to replace SSI, Medicaid, and publicly-funded attendant care services

You are eligible for this Work Incentive if you receive SSI.



# Learn More About Work Incentives

- Discover the truth about common myths:  
<http://bit.ly/Debunking-3-Myths>
- Learn more on Choose Work's website:  
[choosework.ssa.gov/about/work-incentives](http://choosework.ssa.gov/about/work-incentives)
- Read Choose Work's Work Incentives Wednesdays blog series:  
<http://bit.ly/blogWIW>
- Review Social Security's Red Book for more information:  
[www.ssa.gov/redbook](http://www.ssa.gov/redbook)



# Transitioning with Ticket to Work



# Finding Internships or Apprenticeships (Slide 1 of 2)

An internship or apprenticeship is a short-term opportunity for learning new job skills and gaining experience.

- Workforce Recruitment Program for College Students with Disabilities (WRP)
- Emerging Leaders Internship Program for College Students with Disabilities
- Entry Point!
  - <https://www.aaas.org/programs/entry-point>



# Finding Internships or Apprenticeships (Slide 2 of 2)

Once you become involved in your internship or apprenticeship, follow these tips to help you excel and make the most of the opportunity:

- Ask questions
- Volunteer for work
- Seek constructive criticism
- Make new contacts
- Reflect on your experience





# Questions?



# **College to Career: Employment Tools for Students with Disabilities**



# Preparing for Employment (Slide 1 of 2)

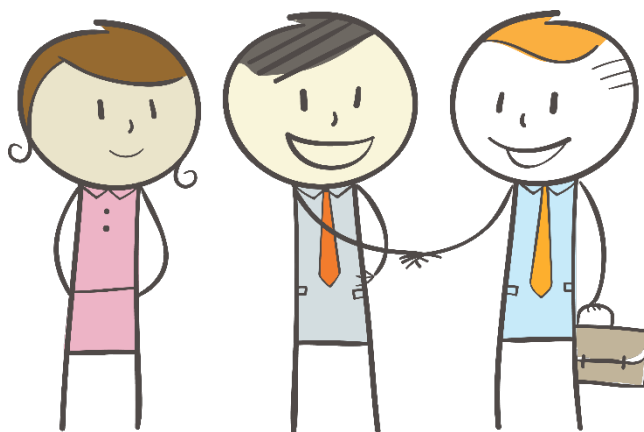
When preparing for employment, the questions that many of us ask ourselves are:

- *“How do I keep my disability from holding me back in finding a job?”*
- *“What type of career do I want?”*
- *“Do I have the education and training I need?”*

# Preparing for Employment (Slide 2 of 2)

Social Security has many resources that can accommodate your needs and reduce barriers to employment.

There are additional resources available that can provide counseling and career services to point you in the right direction. These resources can help you get the education and training you need!



# Preparing for Employment Resources (Slide 1 of 4)

- **Job Accommodation Network (JAN)** is the leading source of free, expert, and confidential guidance on workplace accommodations and disability employment issues and works toward practical solutions that benefit both employers and employees.
  - <https://askjan.org/>

# Preparing for Employment Resources (Slide 2 of 4)

- **Corporation for National and Community Service's** mission is to "support the American culture of citizenship, service, and responsibility."
  - <https://www.nationalservice.gov/>
- **The Arc** helps individuals with disabilities to find jobs and helps employers adapt to the needs of disabled employees.
  - <https://thearc.org/our-initiatives/inclusive-volunteering/>
- **VolunteerMatch** matches volunteers to nonprofits in line with their interests.
  - <https://www.volunteermatch.org/>

# Preparing for Employment Resources (Slide 3 of 4)

- **I Can Connect** is the Federal Communications Commission (FCC) program that funds equipment and provides training for adaptive communications technology if you have combined hearing and vision loss.
  - [www.icanconnect.org](http://www.icanconnect.org)
- **Agency on Community Living (ACL)** funds programs throughout the country that support people with disabilities to live independently.
  - <https://acl.gov/>

# Preparing for Employment Resources (Slide 4 of 4)

- **Assistive Technology Programs (ATP)** are also funded by the ACL. These state programs offer people with disabilities the chance to test adaptive technology before buying it to see if it is right for you.
  - [http://bit.ly/Assistive\\_Technology](http://bit.ly/Assistive_Technology)
- **Benefits.gov** has a rich list of resources for housing, transportation, employment, and financial support.
  - [www.benefits.gov](http://www.benefits.gov)



# Finding Your Employment Destination (Slide 1 of 2)

Resources include programs for:

- Internships
- Job Placement
- Job Search
- Business Loans
- Business Start-up Programs



# Finding Your Employment Destination (Slide 2 of 2)

- **National Center for College Students with Disabilities (NCCSD)** provides technical assistance and information about disability and higher education.
  - <http://www.nccsdonline.org/>
- **DOL American Job Centers** and the **CareerOneStop** program provide local centers for job search and employment training programs, as well as unemployment insurance services across the nation.
  - <https://www.mynextmove.org/>
  - <http://bit.ly/AmericanJobCenters>

# Staying on Course to Financial Stability

- **Your Money, Your Goals** is an income toolkit released by the Consumer Financial Protection Bureau (CFPB) and can help you plan your path to financial independence focusing on topics such as:
  - Planning for large purchases and setting financial goals
  - Saving for emergencies, bills, and goals
  - Tracking cash flow throughout the month
  - <https://www.consumerfinance.gov/practitioner-resources/your-money-your-goals/>

# Success Stories



# Josh's Story (Slide 1 of 2)

- Josh experienced a traumatic brain injury (TBI) at age 4
- With help from his Ticket program service provider, he received:
  - Skills assessment
  - Benefit and career counseling
  - Help with his résumé and job hunt
  - Interview and job coaching



# Josh's Story (Slide 2 of 2)

Josh is financially self-sufficient, feels free of the limitations imposed by relying on a fixed income, and enjoys spending time with his girlfriend. Josh is living the “normal” life he imagined for himself, and tells friends that they should consider the Ticket to Work program so they can “...get a good job too!”

**Josh**

*A Ticket to Work Success Story*



<https://choosework.ssa.gov/library/josh-success-story>

# Michele's Story (Slide 1 of 2)

- Michele, a young woman with Limb Girdle Muscular Dystrophy, wanted to attend graduate school to become a counselor
- Plan to Achieve Self-Support (PASS) allowed her to save for tuition, books, National Counseling Exam fees, professional membership fees, and modifications to the van that accommodated her disability
- With help from the Ticket to Work program and her VR agency, she received:
  - Support for school
  - Career counseling
  - Job accommodation information

## Michele's Story (Slide 2 of 2)

“Everyone’s definition of independence is different. My definition is living on my own and being financially independent. I love my job, and I love helping people to find their career path, without having to worry about what will happen [to their benefits] if they make too much money. It is so rewarding.”

**Michele**

*A Ticket to Work Success Story*



<https://choosework.ssa.gov/library/michele-success-story>



# Questions?



# Finding Employment: Resources



# Finding Employment: Resources (Slide 1 of 3)

- Find resources through the **Association on Higher Education and Disability (AHEAD)**
  - AHEAD is dedicated to equity for people with disabilities in higher education
  - <https://www.ahead.org/>
- Work with your EN and participate in **benefits counseling**
  - <https://choosework.ssa.gov/library/finding-EN-assigning-your-ticket-worksheet>

# Finding Employment: Resources (Slide 2 of 3)

- Apply for the **AAPD Internship Program**
  - The AAPD Internship Program aims to increase the political and economic power of people with disabilities
  - <https://www.aapd.com/>
- Find a mentor with the **Career Opportunities for Students with Disabilities (COSD)**
  - COSD can assist college students or a recent graduates with a disability in gaining the tools and knowledge necessary to secure their career of choice
  - <https://www.pyd.org/cosd-mentoring-employment-college-students-disabilities/>

# Finding Employment: Resources (Slide 3 of 3)

- Learn more about **Achieving a Better Life Experience (ABLE)** Accounts and the ABLE National Resource Center
  - Option for **certain people with disabilities** and their families to save money for the future in a **tax-exempt account**
    - Savings from employment and employer contributions
    - Rollover from a 529 College Savings Account or a family member's ABLE account
    - Bequest from a will
    - Earned Income Tax Credits
    - SSDI or SSI Benefits
  - <https://www.ablenrc.org>

# USAJOBS – Unique Hiring Path: Students and Recent Graduates

**Pathways:** Federal internship and employment opportunities for current students, recent graduates, and those with an advanced degree

- Internship Program
- Recent Graduates Program
- Presidential Management Fellows (PMF) Program

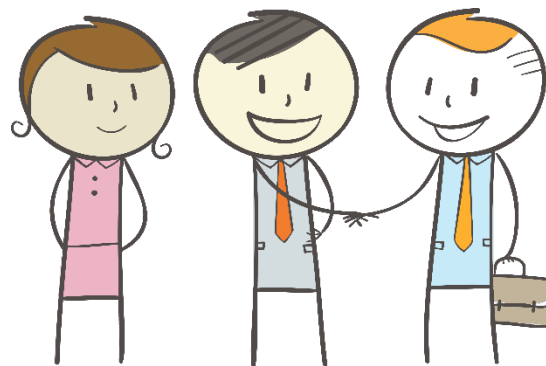
For more information, visit: <https://www.usajobs.gov/>

**USAJOBS**

# Finding Employment: Resources

Career fairs are an excellent way to start or advance your job search. They give you the chance to meet potential employers and learn about different job opportunities.

- Subscribe to the Choose Work blog to get updates on available career fairs!
- [http://bit.ly/CW\\_subscribe](http://bit.ly/CW_subscribe)



# Questions?





# Get Updates!

- Want to learn more about our monthly WISE webinars? Subscribe to find out our topics each month and be the first to register:  
<http://bit.ly/WISEsubscribe>
- Interested in learning more about the Ticket program, employment service providers, and other topics? Subscribe to the Choose Work blog to get our weekly updates sent directly to your inbox:  
[http://bit.ly/CW\\_subscribe](http://bit.ly/CW_subscribe)



# How to Get Started

Social Security's Ticket to Work program has a variety of service providers and other resources ready to help you get started!

## Call the Ticket to Work Help Line:

- 1-866-968-7842
- 1-866-833-2967 (TTY)

**Visit:** [choosework.ssa.gov](https://choosework.ssa.gov)

## Connect:

Visit [choosework.ssa.gov/contact](https://choosework.ssa.gov/contact) to find us on social media and subscribe to blog and email updates!



**Join Us for Our Next WISE Webinar!**

**TICKET**  
*to* **Work**

**WISE**  
Work Incentive Seminar Event

**Ticket to Work: Debunking the 3 Biggest Myths about  
Disability Benefits and Work**

**Date: Wednesday, January 22, 2020**

**Time: 3 – 4:30 PM ET**

**Register online: [choosework.ssa.gov/wise](https://choosework.ssa.gov/wise)  
or call 1-866-968-7842 or 1-866-833-2967 (TTY)**

# Tell Us What You Think!

Please remember to take our webinar survey!

A link will pop up after the webinar, or visit:  
[choosework.ssa.gov/surveys/wise](https://choosework.ssa.gov/surveys/wise).

